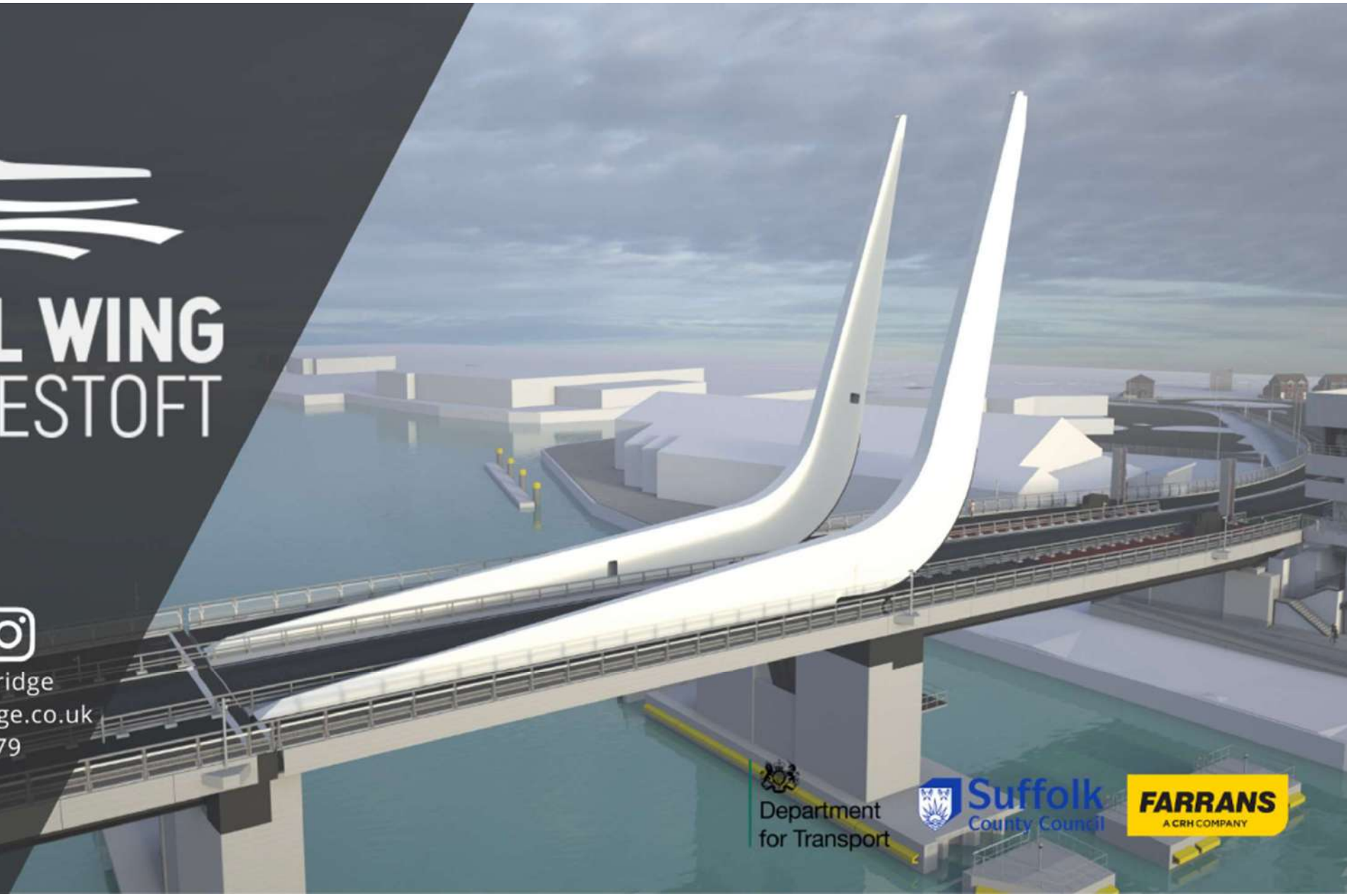




GULL WING LOWESTOFT



@GullWingBridge
gullwingbridge.co.uk
01502 512 779




Department
for Transport

 **Suffolk**
County Council

FARRANS
A CRH COMPANY



Simon Bretherton
Project Director

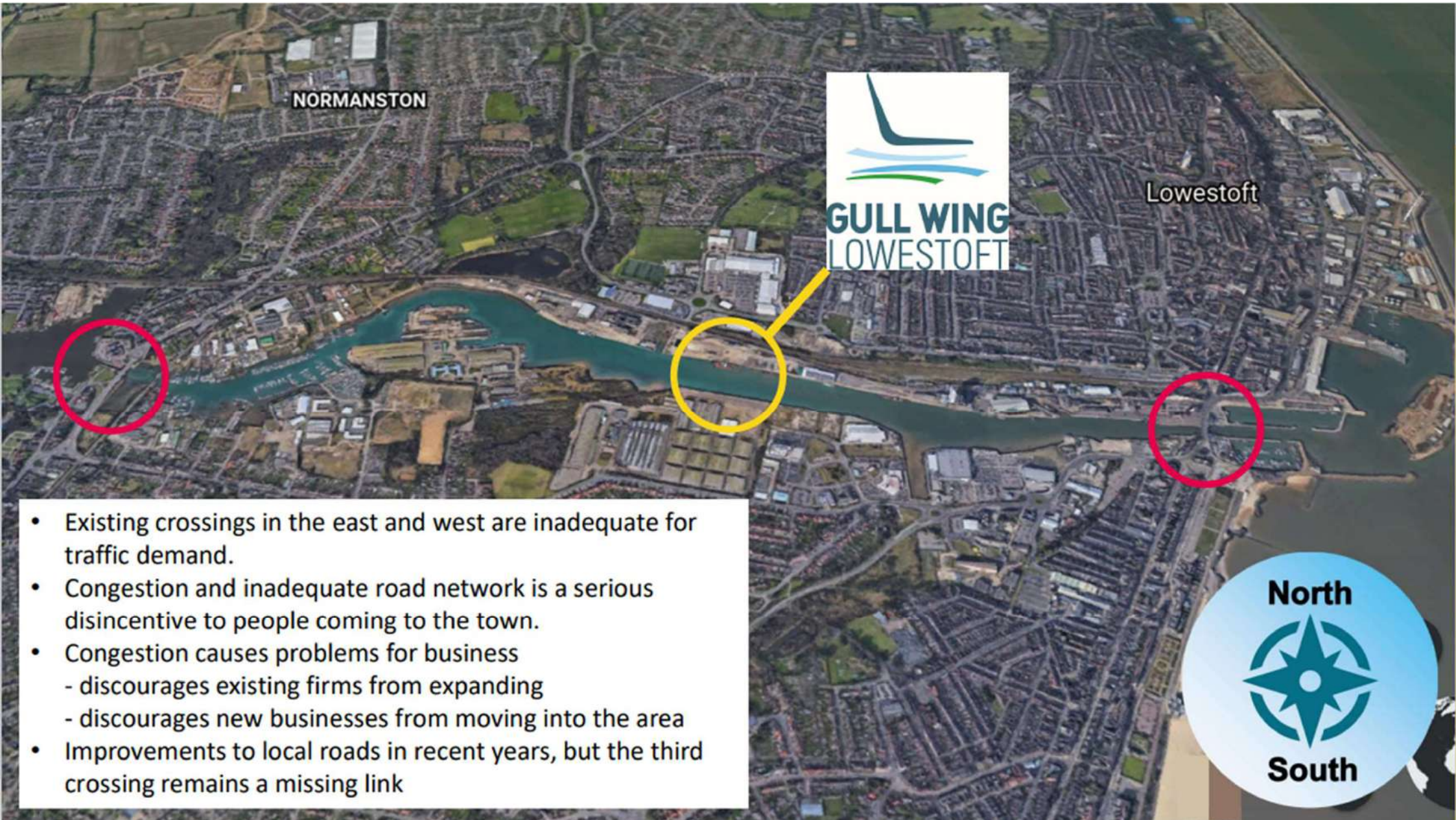
Katherine Potts
Consultation and Engagement Officer



What is the Gull Wing



- Eight Span Viaduct between Tom Crisp Way/ Waveney Drive and Denmark Road/Peto Way
- Single Carriageway Road with Cycle and Pedestrian Facilities Both Sides
- Main Span Over Lake Lothing Opens – Bascule
- Designed to Positively Enhance the Aesthetic and Cultural nature of Lowestoft



NORMANSTON



Lowestoft

- Existing crossings in the east and west are inadequate for traffic demand.
- Congestion and inadequate road network is a serious disincentive to people coming to the town.
- Congestion causes problems for business
 - discourages existing firms from expanding
 - discourages new businesses from moving into the area
- Improvements to local roads in recent years, but the third crossing remains a missing link



Strategic Objectives



AIM:

- To stimulate regeneration, sustain economic growth, and enhance Lowestoft as a place to live and work in, and to visit.

OBJECTIVES:

- To open up opportunities for regeneration and development in Lowestoft
- To provide the capacity needed to accommodate planned growth
- To reduce community severance between North and South Lowestoft



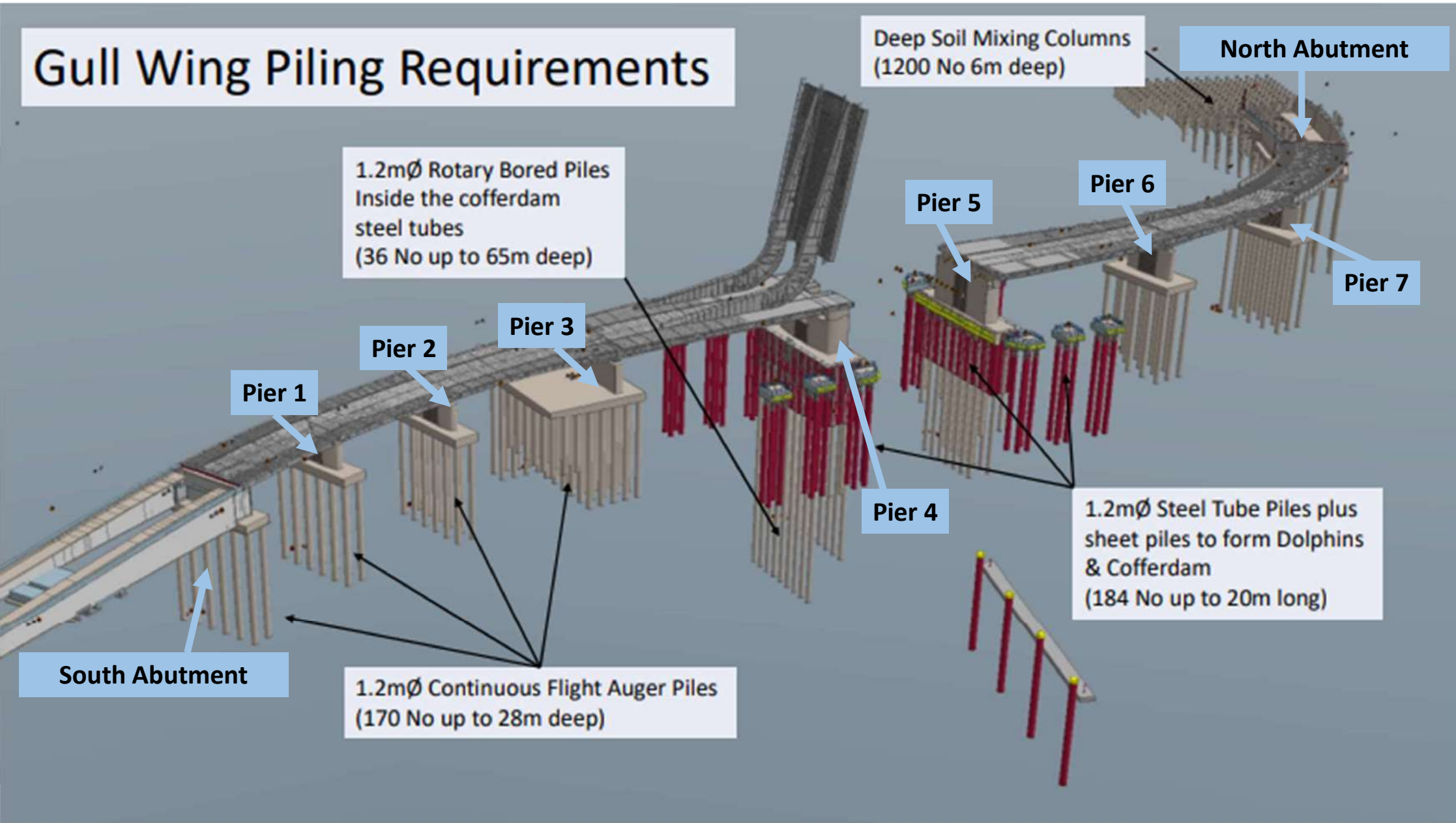
- To reduce congestion and delay on the existing bridges over Lake Lothing
- To reduce congestion in the town centre and improve accessibility
- To encourage more people to walk and cycle, and reduce conflict between cycles, pedestrians and other traffic
- To improve bus journey times and reliability
- To reduce accidents

Gull Wing Facts



- Bridge will be 300 metres in length – about 3 football pitches,
- Cycle and Pedestrian facilities on both sides that will link to existing network,
- Bascule Span Closed: 12 m clearance (approx. 39 ft), around 5x higher than existing bascule bridge,
- 116 seconds to raise the Bridge,
- 106 seconds to lower the Bridge,
- Bascule Span Open: Top of Blade 60 m above water (approx. 197 ft).

Gull Wing Piling Requirements



Deep Soil Mixing Columns
(1200 No 6m deep)

North Abutment

1.2mØ Rotary Bored Piles
Inside the cofferdam
steel tubes
(36 No up to 65m deep)

Pier 5

Pier 6

Pier 7

Pier 3

Pier 2

Pier 1

Pier 4

1.2mØ Steel Tube Piles plus
sheet piles to form Dolphins
& Cofferdam
(184 No up to 20m long)

South Abutment

1.2mØ Continuous Flight Auger Piles
(170 No up to 28m deep)

Recent Progress



June 2021: Pier 3 Piling Starts

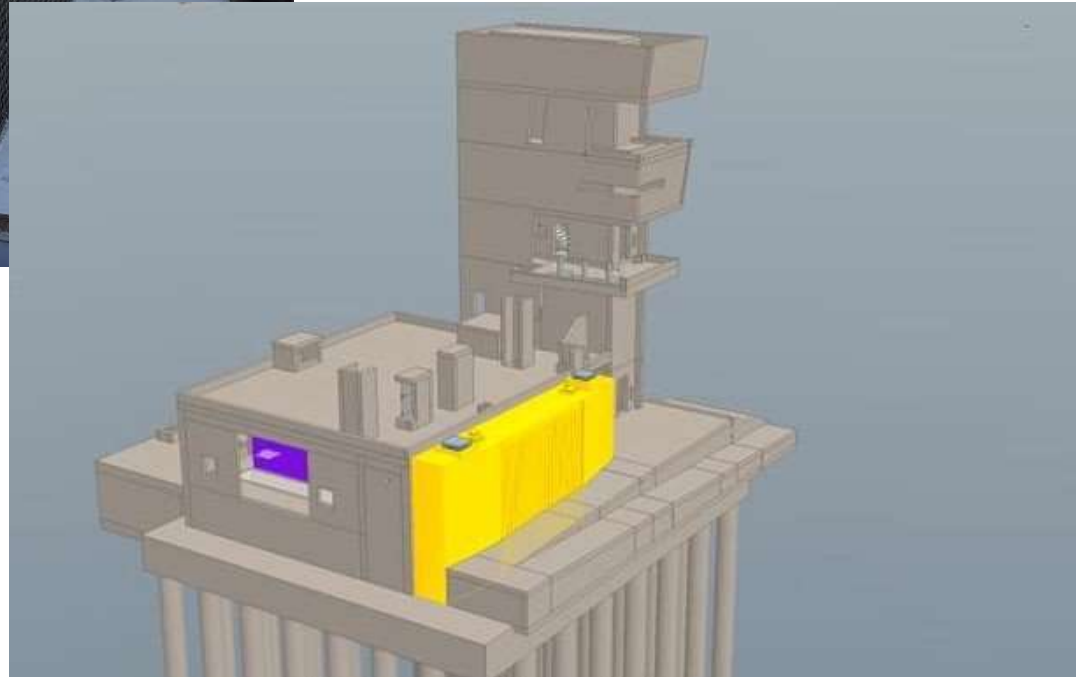


Pier 3 Pilecap: October 2021

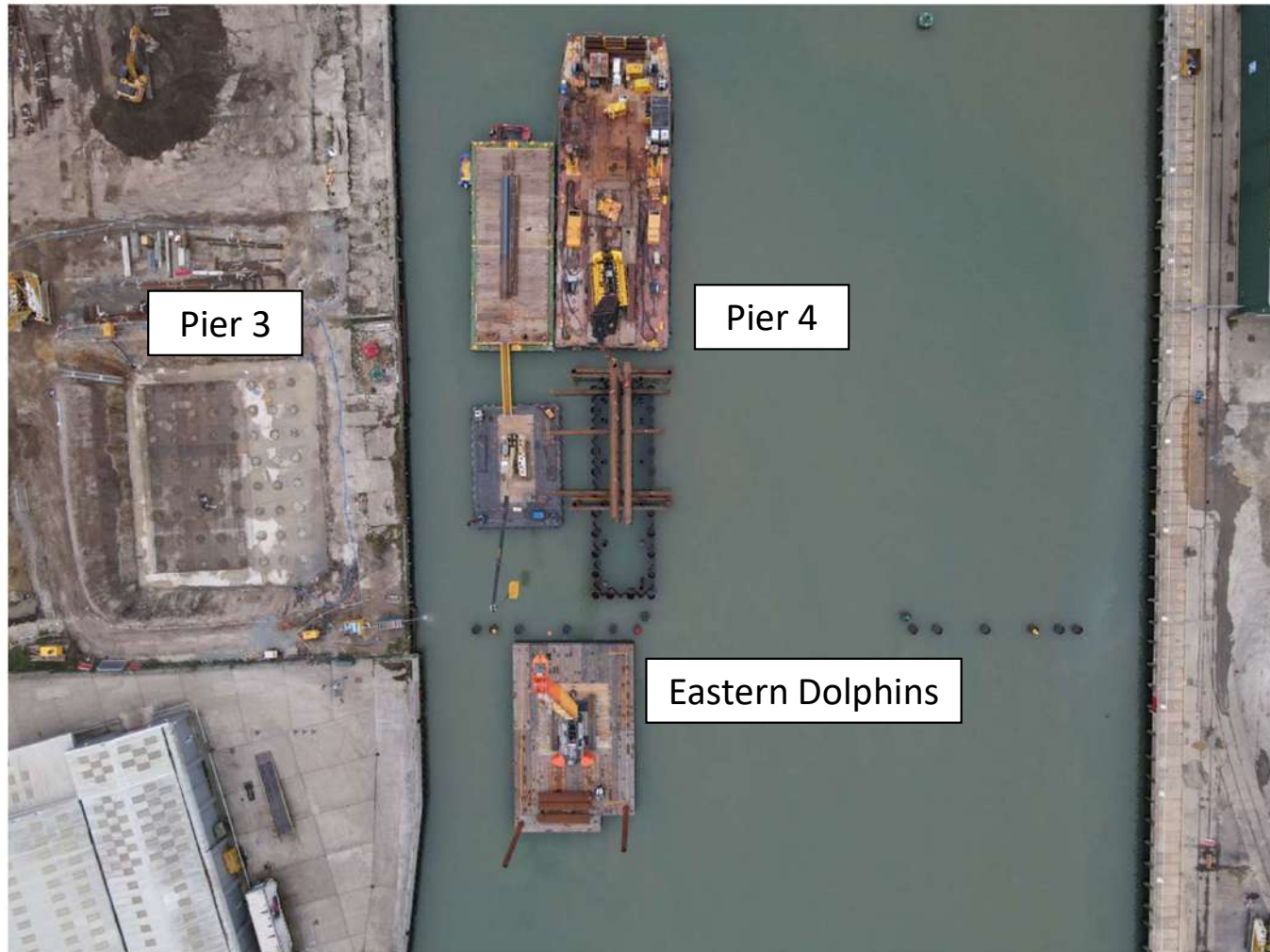




Pier 3: April 2022



Marine Piling Works: November 2021



Marine Bored Piling: April 2022



**Pier 4 Rotary Bored Piling:
Cage Installation**



**Pier 4 Rotary Bored Piling:
Concreting Operation**

Arrival of NAV1: March 2022



Arrival of NAV1: March 2022



FARRANS
A COMPANY

 **Suffolk**
County Council
Investing in Lowestoft

 **GULL WING**
LOWESTOFT

303482

www.mammoet.com

MAMMOET

MAMMOET

MAMMOET

MAMMOET

MAMMOET

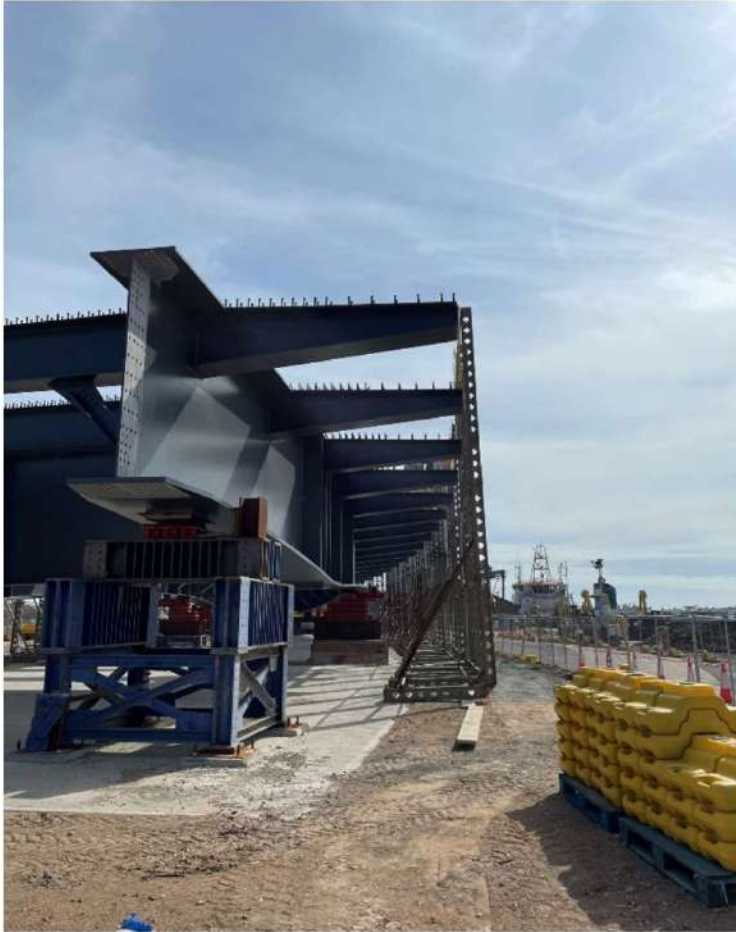
MAMMOET

NARWID
www.narwidgroup.co.uk
020 7540 2500

NARWID
www.narwidgroup.co.uk
020 7540 2500

NARWID
www.narwidgroup.co.uk
020 7540 2500

NAV1 Preparation: April 2022



Edge Beams for Concrete Decking



NAV1 Overview

NAV1 Deck Formwork: May 2022



Permanent Formwork in Place



NAV1 Deck Reinforcement

NAV1: May 2022



Northern Abutment/Pier 7 & Pier 6: April 2022



North Abutment Concrete Pour



Pier 7 – Shuttering



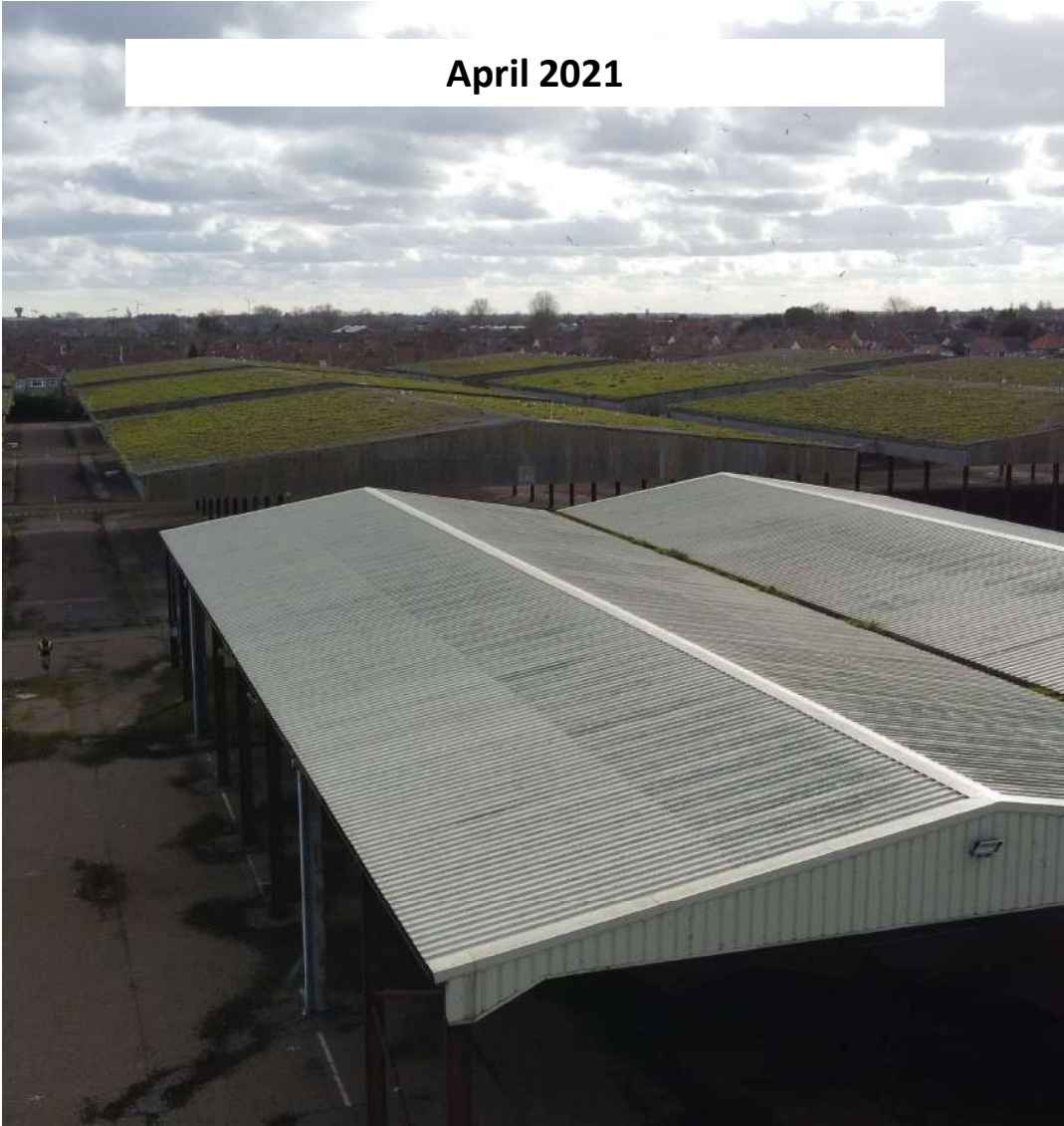
Pier 6 – Excavation

Southern Road Network



Colin Law Way

April 2021



June 2021



April 2022



Colin Law Way Opening: May 2022



Colin Law Way Opening: May 2022



Plan 2: New Colin Law Way, Canning and Riverside Road Layout and Pedestrian/Cyclist Route

Traffic Signal Controlled Plant Crossing

Gull Wing Construction Site

Nexen Lift Trucks

Suffolk County Council - Lowestoft...

Contractors

Enterprise Rent-A-Car - Lowestoft

Waveney Dr

Colin Law Way

Arrow Group

Registration of Births Deaths & Marriages

Lings Honda Lowestoft
Honda dealer

Key

- Road Access
- Pedestrian/Cyclist Route
- Road Closure

Construction Zone for the new roundabout. No public access.

Cyclists to dismount when traveling through the Riverside Road closure.

ASDA

Murdin Moto

Social Value Update



Educational Outreach

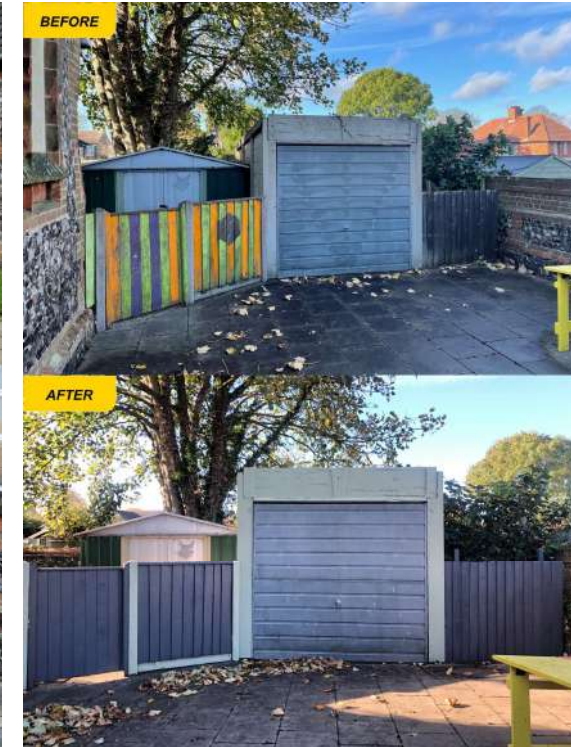
- 10** Career Talks / Open Events attended
- 3** Site Visits held for local students.
- 12** Laptops donated to local Secondary Schools
- 16** Primary & Secondary School Sessions delivered
- 84** Staff Hours dedicated to local educational outreach events
- 1152** Approximate no. of students reached through local educational outreach events



2 **Community Volunteering Events held**
Kirkley Pantry: Interior and exterior painting, vegetation clearance, installation of a new path and new gate.

Woods Meadow Country Park: Planting of Oak Trees

95 **Staff Hours dedicated to volunteering events**
Our next quarterly community volunteering event will be held on 9th June. We will be painting the exterior of Re-Utilise Community Repaint & Scrap Store.



- 5** Job Opportunities for LTU & NEETS
- 3** Apprenticeship positions filled on the project (159 Person Weeks to-date)
- 9** Graduate opportunities on the project (306 Person-Weeks to date)
- 3** Work Experience Placements secured for Spring/Summer 2022
- 36** Full Time Equivalent Direct Local Employees



Local Spend

53

LOCAL SUPPLIERS

18

**LOCAL
SUBCONTRACTORS**

< 70 miles

£12,216,783

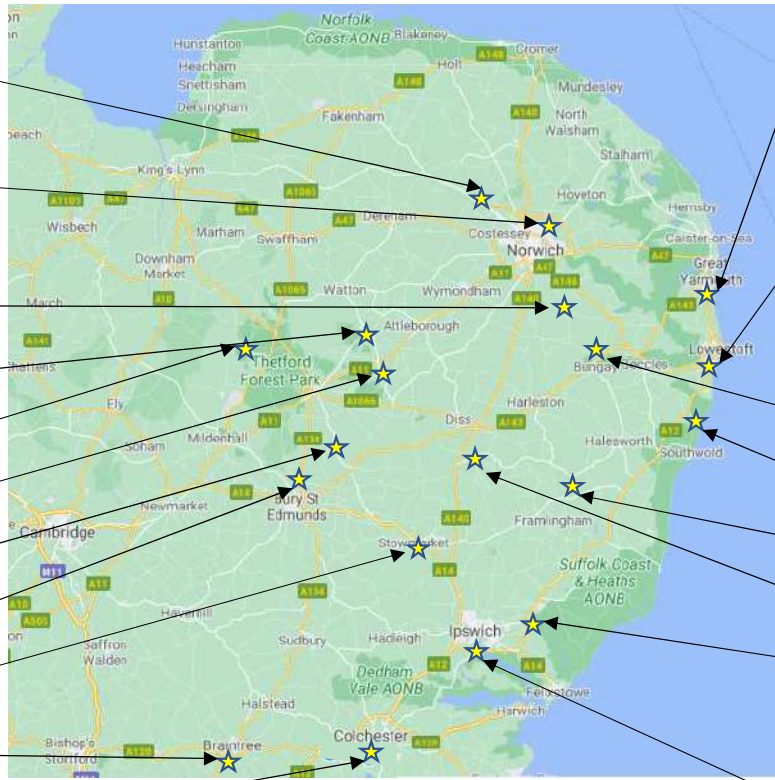
**SUPPLY VALUE FOR
SUPPLIERS**

£4,047,145

**SUPPLY VALUE FOR
SUBCONTRACTORS**

64%

**of all value for
suppliers is
within 70 miles**



- Attlebridge Precast

- Harrison Group
- C&H Quickmix
- NPS Archaeology
- Shearstud Supplies Ltd
- WSP
- Lamberts Norwich
- Wild Encounters

- Breedon Aggregates

- Stuart Wells Dewatering

- Banagher Precast Concrete Ltd

- Holbrook Group

- Wernick Plant Hire

- Arco

- Britannia Archaeology

- Tiger Supplies Ltd
- Keyline Builders Merchants

- JDP Pipes

- East Coast Waste
- Stema Mibau
- Clarksons
- EE Green&Son Ltd

- Asbestos Surveys & Removals
- Coastline Marine Services
- Ley Plant
- Norfolk Marine
- PW Waters Ltd
- Standard Fuels
- Travis Perkins Trading Co.
- Alpine Fabrication Services Ltd
- Sail & Power Boat Training Ltd
- CHPV
- R J Pryce
- PJ Spillings
- Onesite
- Jewson
- Eastern Marine
- ABP Ports
- Standard Fuels

- East Anglian Road Markings

- Micropress

- Premier Toilet Hire Ltd

- APEC Groundworks

- Abrehart Ecology

- Suffolk Highways
- Survey Solutions
- Clarkes Demolition Company
- DPL Electrical
- Highways Assurance
- Toppesfield



THANK YOU



@GullWingBridge
gullwingbridge.co.uk
info@gullwingbridge.co.uk
01502 512 779

