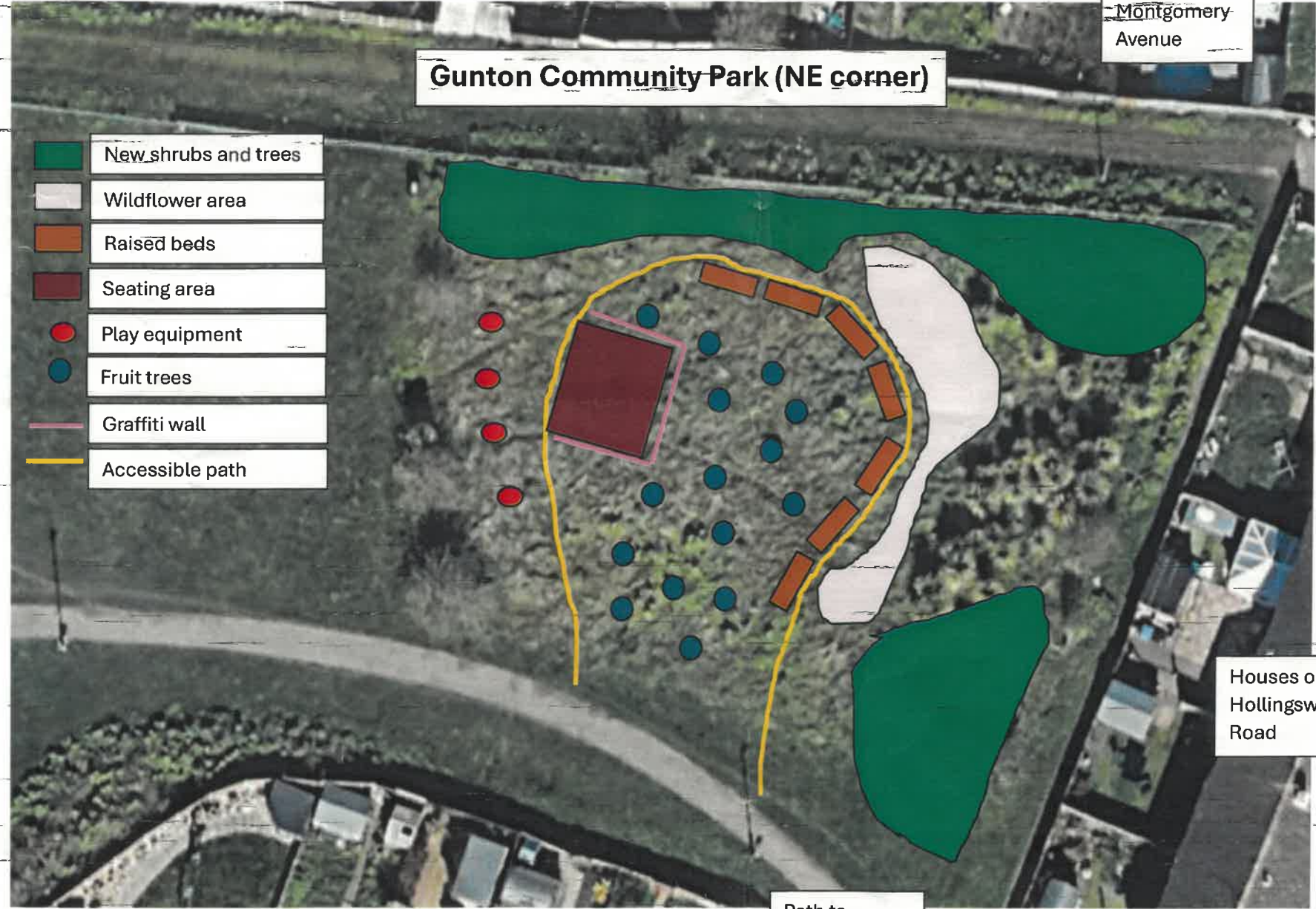


Gunton Community Park (NE corner)

Houses on
Montgomery
Avenue

- New shrubs and trees
- Wildflower area
- Raised beds
- Seating area
- Play equipment
- Fruit trees
- Graffiti wall
- Accessible path



Houses on
Hollingsworth
Road

Path to
Peddars Way

Other suggestions

- Low fencing and self-closing – but not locked – gate to keep dogs in but allow access.
- Raised beds could have variety of uses – sensory plants, food growing, etc. Could be allocated to different community groups for use in cookery classes etc.
- Seating area particularly aimed at teenagers: to include robust picnic benches and swivelling chairs, and if possible have wifi available (as on seafront).
- Installation of additional play equipment may be beyond the scope of this project but could include disability swing, more robust zipwire, things to climb on, adult gym equipment.