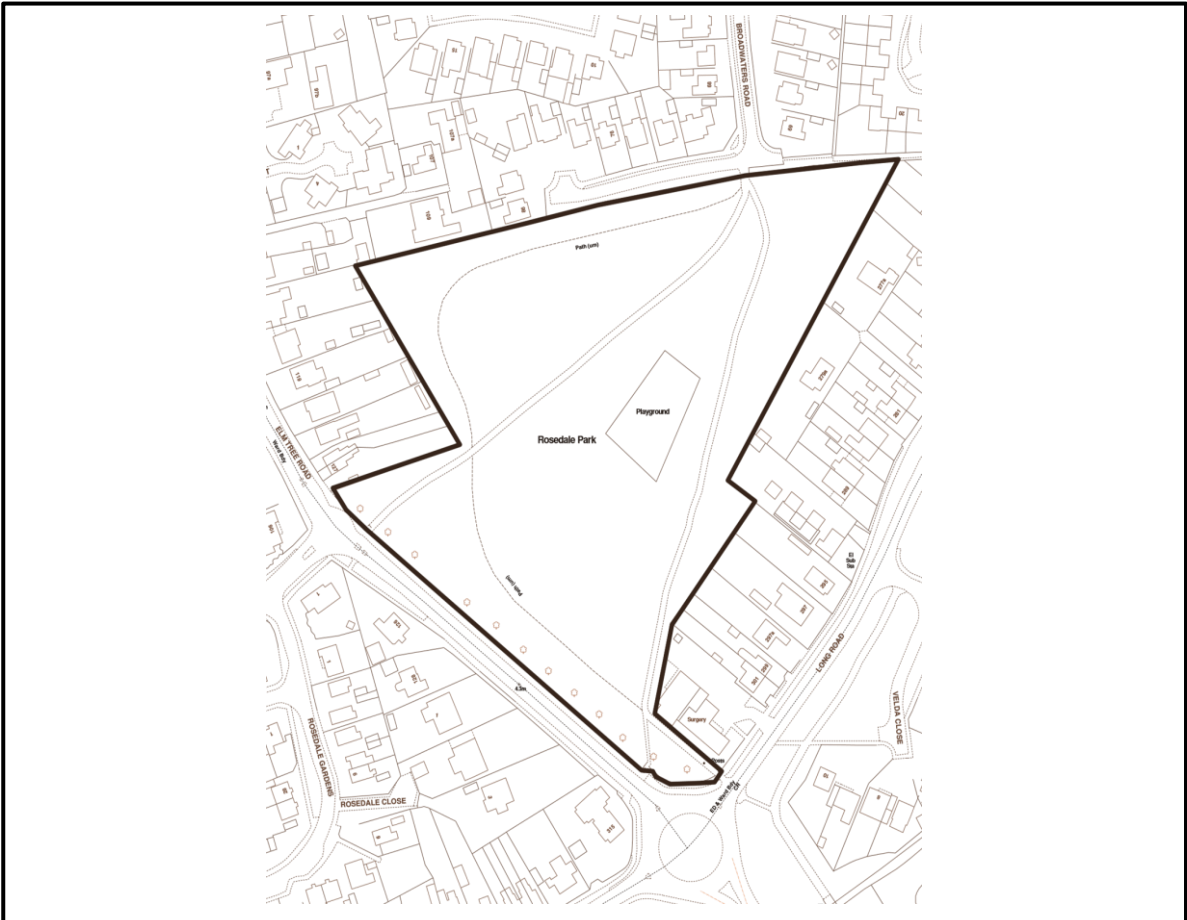


# Rosedale Park, Lowestoft, Suffolk



## Current Site information

Ward: Elmtree	Site Reference: SK261260
Area:	Special Status:
Covenants:	Entrances: 3
TPOs:	
Services:	Facilities on site:
Access:	
Species on Site:	Soil Type:
Issues:	

### Current main use of site:

The site is currently used as a park with grass football are and play area. It has two lit paths going through the park.

## Future planned use of site:

Rosedale is a sizeable park but lack the facilities and parking to make it a destination park making it a community park.

The Junior play equipment in the park has only been installed since the foundation of LTC however the Toddler provision could be enhanced and could do with extra picnic benches as well as a children's themed bin within the play area.

The full-size football pitch area has been lost and the knockabout area has only one mini goal these could do with replacing with possibly a MUGA or MUGA ends.

There were benches along the hedge line on the northern edge of the park which could do with replacing (2+)

There are also some trees missing from the tree line alongside the road and the paths and play area could benefit from additional tree planting which has been considered via the tree council grant.

There are at least three different types of bins in the park which should be standardised to two types with regular bins at the three entrances plus a child-friendly bin(s) at the play area.

The park is used by youths in the evenings so a specific area with meeting point/hub seating and maybe WIFI/Bluetooth column in the eastern recess could be positive.

By nature, this is an open space style park so does not need a lot of shrub/perennial planting although some of the boundaries might be enhanced by this and the play area might be enhanced by sensory planting. It has been agreed to plant a new avenue of trees and add to the other avenue of trees as well as the trees along the Elm Tree Road boundary. The top end of the park will become a wildlife area with paths for dog walkers. The dog leg at the top end of the park could become a teenager area with appropriate seating and the Elm Tree end of the park would be the sport area.

### Key Development Opportunities:

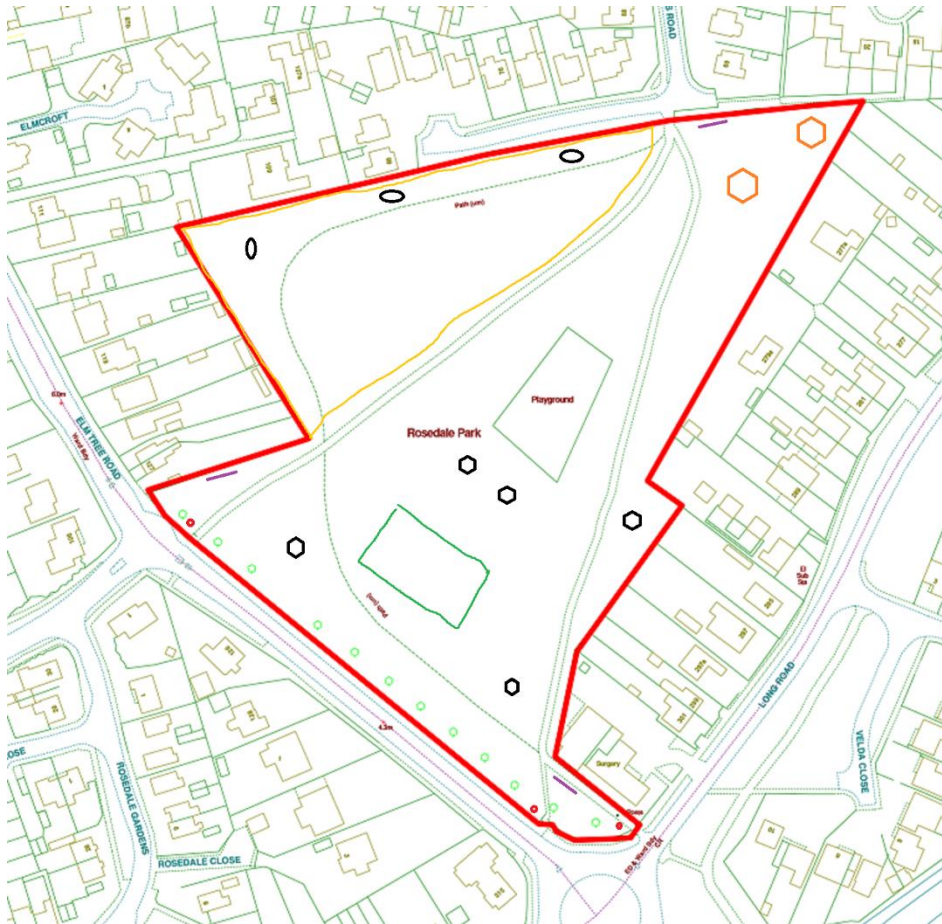
- CCTV – improve coverage
- Seating
- Bins
- Bike Racks
- MUGA
- Wildlife Area
- Signage
- Drinking Water fountain

Resources Required:	Various
Funding Required:	Funding from the council
Stakeholder Group	No
Friends Group	No

### Current Benches, Bins and Bike Racks Inventory



Code			
	Item	Quantity	Potential Needed
●	Bin	4	2/3 to cover the entrances from Elmtree Rd and Long Lane
●	Benches	4	There is potential for some rustic benches in the wild flower area to the north near to Broadwaters Road and also some teen seating in the top east corner bnear the Braodwaters entrance. The could be some benches along the cycle path and some more picnic benches would be beneficial.
	Bike Rack	0	Potential for three location, one near each entrance



## Code

	Bench		Bin
	Picnic Bench		Wildflower area
	Teen seat		MUGA(s)



The trees for this park are:

### **For the fenceline**

*Liriodendron tulipifera* 'Aureomarginatum' (Red) x1

*Platanus x hispanica* (Dark green) x 2

### **For the Walk and Canopy**

*Acer* 'Crimson Sentry' (Dk red) x 1

*Acer* 'Eskimo Sunset' (Duck egg blue) x 1

*Liquidamber styraciflua* 'Lane Roberts' (Peach) x1

*Sorbus* 'Joseph Rock' (Pale blue) x1

*Sorbus* 'Pink Pagoda' (Pink) x1

*Tilia cordata* 'Winter Orange' (Orange) x 11

### **For the Nature Area**

*Amelanchier lamarkii* Multistem (White) x1

*Crataegus laevigata* 'Rosea Flore Pleno' (Dk Blue) x1

*Crataegus laevigata* 'Crimson Cloud' (Turquoise) x1

*Malus* 'Gorgeous' (Mid Pink) x1

*Malus* 'Prairie Fire' (Deep Pink) x1

*Malus* 'Profusion Improved' (Purple) x 1

## Action Plan Further Information

### Trees

The key addition to this park is the major tree planting that is planned and has been agreed and budgeted.

### Seating

There is very little seating in the park. It is a park which is used a lot by teenagers and families as well as dog walkers. To meet these needs it is proposed to add extra picnic benches in the lower section of the park, two teen seats (as in the Britten Piece 5YP) in the top corner of the site and three rustic style benches in the wildflower/dog walking area.

### Play Area

The play area is only three to four years old so will not need replacement for some time however toddler provision could be considered.

### Sports

There were originally two football areas in this park one in the lower area with full size goals and a smaller one on the slope where it is proposed that the wildflower area goes. However, when LTC inherited the park there were only two goals, one full size and one smaller one. It was agreed to move the smaller one down to the lower area. The options here are to maintain a full size pitch with goals and to add a MUGA to allow for a wider range of sports to be played or possibly to consider two MUGAs. This might be something which consultation might help with providing an answer.

5 year plan schedule of works				
Year	Item/project	Cost	Existing Budget	To be budget for that year.
2021-22				
2022-23				
2023-24				
2024-25				
2025-26				
Longer Term				