



Project Profiles



Contents

1 Who Are We? 04

2 The Team 08

3 Experience & Clients12

4 SX Track Experience16

5 National Track Experience 26

6 Pump Track Experience 42

7 Skate Park Experience..... 64

8 MTB Courses & Bike Skills Areas Experience 76

9 References..... 84

***“The final product easily demonstrated
their years of know-how with a
compelling and dynamic design”: Declan
O’Hallaran- Cambridge City Council***



1

Who Are We?

Who Are We?



We are a British Cycling approved track building company based near the Midlands. We have completed numerous projects around the world for a wide variety of clients, such as:

- The BMX venue for the London 2012 Olympics.
- The BMX SX track and Pump Track at the UCI World Headquarters at the World Cycling Centre in Aigle, Switzerland.
- Birmingham 2012 BMX World Championship track.
- New Zealand's 2013 BMX World Championship Track.
- National Cycling Centre BMX SX track.
- Glasgow 2018 European Games BMX SX Track and Pump Track.



We have completed over 100 Cycling projects since forming in 2008 and around 60 of these are pump tracks.

We have assisted British Cycling and the UCI by offering specialist consultancy

We have in house resources and all the relevant machinery to utilise and complete any cycle projects to an exemplary standard. We employ only skilled driven individuals who all have massive experience in the cycle track development and construction.

We have a wealth of experience working for charitable organisations, schools, sports clubs, Parish Councils, Town Councils, City Councils, Governing Bodies and also the Cycling World Governing Body the UCI.

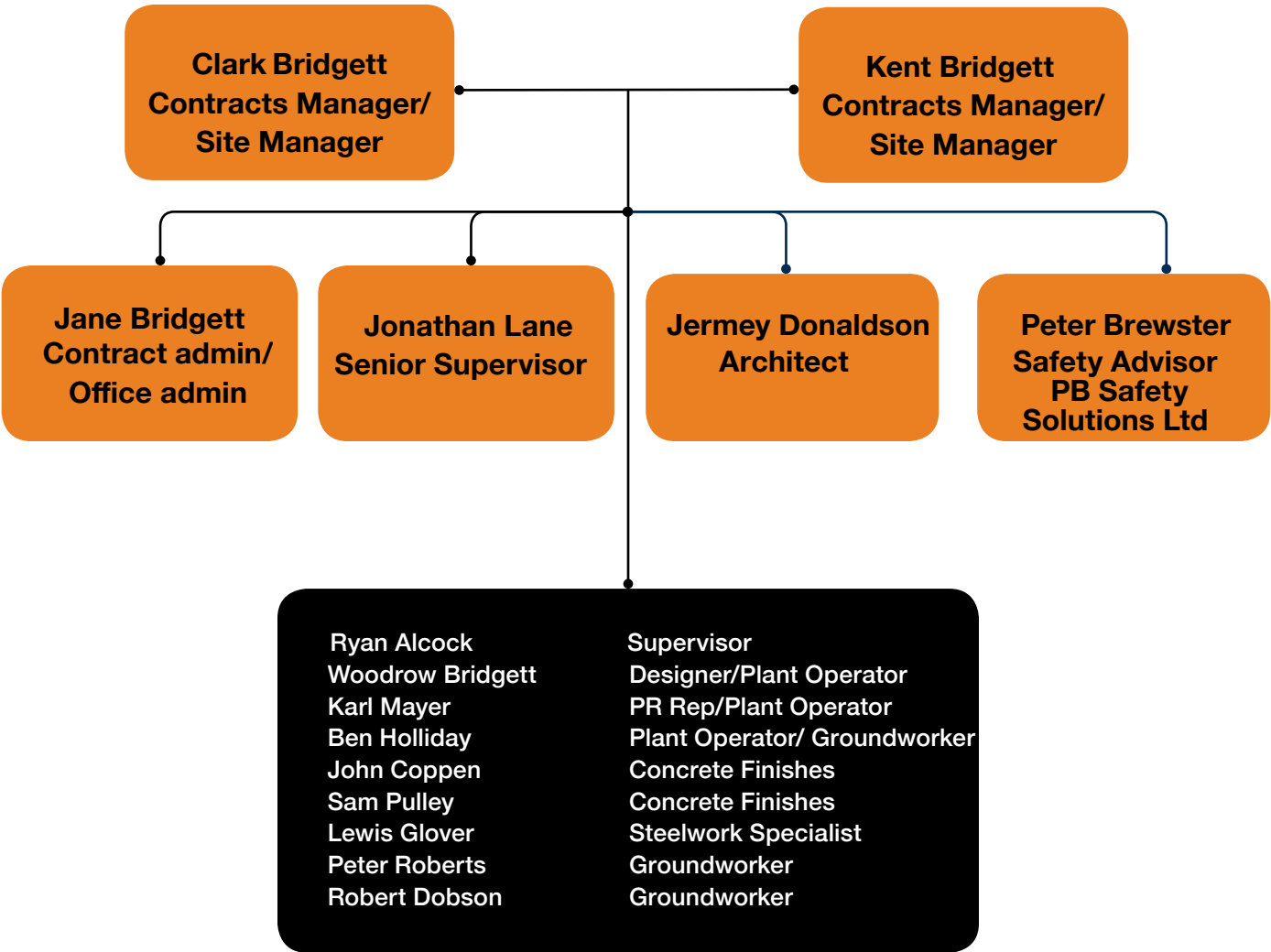
2

The Team



Resources

- All in house staff have previous experience on cycle track and skatepark construction projects.
- All labour have worked on at least 5 separate cycle track and skatepark projects throughout the UK or worldwide.
- All management to have personally worked on at least 2 Olympic standard facilities for World Governing Body the UCI.
- All management have worked on at least 10 UK National projects.
- All managers / supervisors to have successfully managed projects exceeding £200k individual project value.



3

Clients & Experience



Below is a list of some of our valued Clients who we have successfully worked for in the past.

Local Authority's

- Birmingham City Council
- Cambridge City Council
- Southwark Council
- Cheshire West and Chester Council
- Cheshire East Council
- Shropshire County Council
- Telford and Wrekin Council
- Kent County Council
- Bury St Edmunds Town Council
- Wyre Forest District Council
- Tamworth Borough Council

Others

- London 2012
- Glasgow 2018
- JCB
- National Trust
- Forestry Commission
- Lee Valley Velo Park
- Access Sport
- Giving Young People Opportunities

Cycling Federations

- The UCI
- World Cycling Centre
- British Cycling
- National Cycling centre
- US Cycling
- United States Olympic Committee
- French Cycling
- German Cycling
- Portuguese Cycling
- New Zealand Cycling
- Norway Cycling

Major Contractors

- Bam Nuttall
- Kier
- Volker Fitzpatrick
- Balfour Beatty
- Ground Control
- Berkley Homes

At C&K we execute a wide range of varied cycling facility projects from pump tracks to international BMX supercross tracks, to national standard BMX Tracks, to MTB Tracks and maintenance.

We include a selection of recent project profiles to illustrate the type of quality work we undertake and ability to tackle a range of project types.

The company's growth has been based on repeat business from our growing client base. They are organisations with whom we work continually, proving that we regularly produce a high quality project solutions on time, and within budget.



4

SX Track Experience

London Olympics



In the summer of 2011 Clark & Kent Contractors was contacted in advance of the Games for a pre-Olympic test event arranged by London Prepares 2011. After working alongside the UCI track builder on this ambitious project, it was agreed that Clark & Kent would take on the job of the BMX Supercross (SX) track rebuild for the 2012 London Olympic Games. To be approached by the London Organising Committee of the Olympic and Paralympic Games (LOCOG to build the new BMX Track for the 30th Modern Olympiad in Stratford,

London was not just a tremendous challenge but also a dream come true for the Clark & Kent construction team. Hopefully, the pictures can do full justice to the Olympic BMX track, the workmanship and the attention to detail that the project demanded. The adapted Olympic BMX track, which hosted the BMX cycling competition in the 2012 London Olympics, was reopened to the public nearly two years later on March 4th, 2014. The floodlit 400-metre track at the former Olympic Park in Stratford has now been adapted so that the public can use it. The Olympic BMX track is open to all bikers, from beginners to advanced.



The toughest Olympic challenges remain so that advanced and experienced riders can test themselves on the Olympic course. The BMX track is part of the Lee Valley VeloPark, which also has eight kilometres of mountain bike trails and a one-mile road racing circuit. Floodlights mean that riders can use the track into to late evening, and there is a cafe, cycle hire facility and workshops as well as coaching available for bike riding visitors.



Glasgow European Championship Track



C&K ere approached in the summer of 2017 by Glasgow 2018 to offer consultancy and design work with regards to a new super-cross track and facility which was due to be the track for the upcoming European BMX championships. In addition too this they wanted us to guide a design and overawe brief workshop with a variety of stakeholders in this internationally televised competition. This was to be Scotlands first facility to incorporate an 8m & 5m start hills, along with split first and second straights to facilitate for both challenge class and elite level riders. With a design based on the current

UCI guidelines, the goal was to provide both a safe yet challenging track. The design was to incorporate a varying degree of jumps, incorporating a Pro Section and rhythm section while at the same time ensuring younger riders were also catered for.

With this in mind, we where able to develop a comprehensive shared straight system, using both the five and eight meter hills for various classes. Due to the nature of competition to be held on the track, it's final length clocked in at four hundred meters, marginally bigger than the length of some other UK based SX tracks but indie with current UCI guidelines.

There scale of the construction operation was



reflected in the build time, taking around 20 weeks from concept to completion. The project was delivered on time and under budget, receiving recognition and merit from both riders and officials alike.

Along side this, a fully implemented drainage system was installed, in order to cope with the large volumes of rainfall Scotland experiences, as well as a full flood lighting system to enable riding at night time as well as day. Groundworks and earth moving was a large factor in this project, with almost the entire track being built from the ground up. All three berms where built with adverse weather conditions also in mind, using both a sub base, base and topping layers to ensure no slipping of the topping surface, and also low rate of deterioration over time due to weather.



Birmingham SX Track



Clark & Kent Contractors joined the design team that was brought together to build the venue for the 2012 BMX World Championships hosted in Birmingham at the National Indoor Arena.

Clark & Kent staff worked with key people from British Cycling (BC) along with Grant White, the BC National BMX Squad's head coach in order to complete the ambitious project.

In May 2012, we implemented the design for building the BMX Supercross (SX) track on the floor of the National Indoor Arena at Birmingham in a single week. Conventional building methods went out the window due to the nature of the project and the restricted timescale. Other challenging issues for Clark & Kent included such problems as the ground weight allowed by the indoor floor. Clark & Kent Contractors overcame all the problems, and the track was delivered on time and proved a great success for both Clark & Kent and British cycling.



After riding the finished product, Sam Willoughby, 2012 Elite Men World Champion, said he felt Clark & Kent should build all World Cup BMX tracks in the future. We were very proud that British Cycling, Birmingham City Council and the UCI all agreed that Clark & Kent had surpassed their expectations given the space available and the short timescale for this major BMX Supercross (SX) track building project.



Auckland SX Track



Following on from their success at building the BMX track for the BMX World Championships 2012 in Birmingham UK, Clark & Kent Contractors were invited by Bike New Zealand to repeat the success overseas.

In 2013, Bike New Zealand selected Clark & Kent as their specialist contractor to build the track for the 2013 BMX World Championships to be held in Auckland, New Zealand.

The BMX building project demanded a huge transformation of the Vector Arena in Auckland, a centre usually used to hold concerts, galas, comedy shows, family events and other functions.

Working to an extremely tight timescale and within the weight and space constraints of the Vector Arena, Clark & Kent managed to produce a truly world class Supercross (SX) track to host a very memorable World Championships.

The project also included an overnight re-configuration that allowed elite competitors to race on.



Tarmacadam corners, along with typical limestone straights, were built on top of a wooden mass-filled structure designed to accommodate the weight and to ensure the project was completed within the time limits imposed by the Arena authorities.



Portugal SX Track



2017 for Portuguese Cycling federation at the National Velodrome in Aveiro, Anadia.

UCI Category 1 BMX SX Track.
European spec of stone, stone dust and tarmac corners.
3 sets of split straights



Stuttgart SX Track



Stuttgart. 2017 first visit for one week then completed in Summer 2018.
For BDR (German Cycling federation)
Stuttgart
6 week project.

Shaping, compaction, surfacing, tarmac, drainage
Category 1 SX Track, 2 earth and tarmac start hills, 3 split straights.
first of its kind in Germany to develop the olympic and elite riders.



Paris SX Track



Paris, SQY. A few stakeholders were involved in the project Velopolis, the city of Saint Quentin en Yveline and also French Cycling Federation.

Track was constructed a couple of years previously be a French track building company but the client wasn't happy with the finish or track so they bought C&K in 2015.

We worked on a labour and Plant basis bringing equipment from England to complete the project.

Project was delivered on time and on budget and has since been successfully used for the UCI BMX SX World Cup rounds



Rockhill SX Track



When Rock Hill BMX Supercross (SX) track in South Carolina, USA, was chosen as the venue for 2017 World Championships the city called in Clark & Kent Contractors to carry out essential improvement works to the existing track. In the summer of 2014, the City of Rock Hill commissioned Clark & Kent to travel to the United States and rebuild their new Novant Health BMX Supercross Track and undertake some specialist tarmacadam surfacing on their corners.

Knowing that the track is to be used for the World Championships in 2017 meant that every

aspect of the BMX track build needed special attention to detail. Build time was approximately for Clark & Kent was two weeks using a typical US specification for the soil and tarmacadam for the corners. After completion, the track has hosted of a range of BMX race events and the rebuild by Clark & Kent is proving to be a resounding success. Located at the Rock Hill Outdoor Center in the Riverwalk Development, the Novant Health BMX Supercross Track re-opened in August 2014. This facility is the first Olympic-standard BMX training facility to open to the general public on the US East Coast.



The track features amateur and elite supercross start hills and a skills-building pump track. Since the track rebuild, Rock Hill BMX SX has hosted many events such as the USA BMX Gold East Regional Championship, the USA BMX Carolina Nationals, and the USA Cycling National BMX Championships. As well as hosting world class events and championships, the facility offers instructional programmes, open track sessions for all ages and a pump track where riders can develop their track racing skills.



5

**National & Regional
Track
Experience**

Olympic Legacy BMX London



Acting as specialist consultants, design team and specialist contractors, Clark & Kent Contractors undertook a massive contract, under the supervision of civil engineering firm Bam Nutall, at the Queen Elizabeth Olympic Park on the biggest construction site ever seen in the UK.

Although it was a heart-wrenching experience for Clark & Kent to dismantle possibly the greatest BMX track the world has ever seen it was fantastic to be able to rebuild the track so that the public could enjoy it to the full.

- A 14-week project saw Clark & Kent Contractors undertake a list of specialist construction activities that included:
- The removal of concrete fixtures & fittings.
 - The replacement of hard and soft landscaped areas.
 - Remodelling of 50,000 cubic metres of base material.
 - A comprehensive drainage scheme.
 - The excavation and installation of ducting to service the track.
 - The supply and Installation of starting gate system.
 - Sub-base and finished unbound surfacing.



- Tarmacadam surfacing.
- A bespoke landscaping and planting scheme.

All of these elements tied in with all the supporting infrastructure supplied by other contractors that have created a unique facility that has proved a great success for London and the UK.

It was a pleasure for Clark & Kent to have the opportunity to install such a facility in such a fantastic setting in the knowledge that it carries with it the Olympic 2012 legacy.



Burgess Hill National Track



Following the success of Peckham BMX Club from 2008-2012, and it's rising reputation as one of the best BMX clubs in the country, the London Borough of Southwark decided it was time to build a new national standard BMX track.

Peckham BMX had been riding out of a sub-standard informal track for many years and the club, along with the London Borough of Southwark, secured funding for a state-of-the-art national BMX track and supporting infrastructure and amenities.

Clark & Kent Contractors were involved in plans for a new BMX track at Burgess Park right from the start working alongside LDA design, Peckham BMX Club and the London Borough of Southwark.

Once plans were finalised, Clark & Kent contributed a 3D mock-up and detailed BMX track construction drawings to allow architects to measure and quantify materials for the tendering process.

Clark & Kent were awarded the BMX track construction contract thanks to the breadth of their portfolio, their reputation as BMX track builders and the attention to detail shown on previous BMX track building projects.

Burgess Park now has one of the largest BMX



tracks in the UK at 350 metres with three three-metre high berms and a 70-metre pro straight that is one of the most challenging in the country, with only a handful of riders being able to jump it.

Centrally located in the heart of London, it attracts high profile users including the Royal Family of Dubai. The track is also used by international BMX teams racing the World Cup series and those on tour in the UK, including the US and Australian teams.

In July 2012, the park reopened following an £8 million redevelopment project, and in August 2013, the BMX track was opened.

In 2014, the park was awarded the prestigious BALI national landscape award that recognises 'exceptional excellence' in landscape design, construction and maintenance.



Cumbernauld Combo Track



Clark & Kent Contractors were selected by North Lanarkshire Council to undertake the design and build of a new state-of-the-art facility at Broadwood Stadium, Cumbernauld. Working as the principal contractor, Clark & Kent used the services of fencing and electrical sub-contractors to deliver the project on time and on budget. The final design saw C&K construct a bespoke BMX racetrack which was the first of its kind in the whole of Europe.

The BMX combination track features:

- Bespoke C&K-designed start hill canopies.
- A floodlighting system.
- Comprehensive drainage scheme.
- Spectator separation fencing.
- Perimeter track fencing.
- Tarmacadam surfaced corners.
- Tarmacadam finish line and braking zone
- A BMX bike pens area

The build time for this ambitious project was just 12 weeks. North Lanarkshire Leisure Trust manage the facility and local BMX club Cumbernauld Centurions have moved in and now operate from the site.

NL Leisure says the brand new outdoor BMX track at Broadwood Stadium is “guaranteed to get your heart racing. Beginners and



experienced riders are welcome and we offer a full range of programmes from one to one coaching, small groups, private hire and open sessions.”

The club works with young people, and all the coaches and committee members are registered with the Protecting Vulnerable Groups Scheme, which is managed and delivered by Disclosure Scotland. The standard of the BMX facility, coupled with the commitment of both North Lanarkshire Leisure Trust and Cumbernauld Centurions, saw the UK BMX Series return to Scotland for the first time in 25 years during the 2015 UK National BMX Series.



Dedemsvaart BMX Track Holland



track build enabling them to reach the peak of their potential with the help of a varied and progressive track design. Following completion, Niek has won his first Elite Level World Championship and World Cup series rounds after training on the Dedemsvaart BMX track.

The build time for Clark & Kent was just under two weeks due to the nature of the project, and both the club and ourselves were extremely satisfied with the finished results.

Their website says: “In order to achieve this, we have in 2013 a newly created job, by the renowned builders Clark & Kent Contractors

In mid-2013, Dedemsvaart BMX Club in Holland approached Clark & Kent Contractors to construct a new BMX track at an existing location. On a labour-only basis, we travelled over to Holland to complete the BMX track building works that included formation, sub-base and top surfacing as well as the application of specialist block paving and associated groundworks. Local riders Niek Kimmann and his brother Justin Kimmann have since had some fantastic success on the back of the new



which also include Olympic tracks and jobs built for World Championships. FCC De Vaart is a BMX club that has moved around a lot since its formation in 1985. The club had several homes, and the track has been relocated several times as more companies settled in this industrial area of Holland. The club finally settled in Archimedesstraat 14b and a new track constructed in 2007. Such is the popularity of BMX bike racing in the region that it was soon necessary to upgrade the track, and that is where Clark & Kent came into the picture.



Cyclopark, Gravesend, Kent



Clark & Kent Contractors were approached by multinational construction company Volker Fitzpatrick to build a national level BMX track in Kent, England.

A design and build process, the project was completed in the summer of 2011. The track has since been used for the Southern Regional Championship BMX races before being officially opened and organisers expect to attract international BMX race events in the future. The track features a five-metre start hill and a Bensink eight-man safety gate (pictured above in use by the USA BMX team before the London 2011 World Cup event).

The design also includes pro-straights, extensive drainage and — a first in the UK — an innovative split-height first turn. Other features incorporated into the track design are typical multi-level third and fourth straights, comprehensive spectator areas and an extensive tarmac pens area.

The Cyclopark track was used by several countries for BMX training prior to the London 2012 Olympic Games, including the USA team who used it as their primary race training facility.

Facilities include a race smooth tarmac 2.9km floodlit Cyclocircuit, 6 km of Cycloterrian mountain bike trails and CycloBMX track with its awesome 330 metres floodlit track “designed for BMX beginner’s to professional riders featuring obstacles that guarantee a thrilling ride”.



Client comment
Clark & Kent were selected for the contract due to their high reputation for building top quality BMX tracks. After working with them on the contract it is clear why they have built up such a reputation . . . The best form of reference I can give is to say, if I have the chance to build another BMX track, Clark & Kent will be building it for me.



Hereford BMX Track Herefordshire



The Hereford BMX track is used and maintained by Hereford Dirt Riders BMX club and the race track is perfect for all levels of riders from beginners to the most experienced. You can visit their Facebook page for details of upcoming BMX events.

Visitors say the Hereford BMX track has a great family vibe and the facility is frequented by BMX bikers from all over the country. The project was funded by Herefordshire Council and the National Lottery. Work on the BMX track building was completed in three weeks, and all parties were very pleased with the results.

Clark & Kent Contractors received many compliments on the speed and standard of construction.



The BMX racetrack at Hereford is built to a very high standard by Clark & Kent Contractors and is the first track in the UK to feature a Bensink start gate, similar to the one used at the 2012 London Olympics.

The Hereford BMX Track located on Westfaling Street playing fields in the town features tarmac turns, a stone sub-base and a dolomite surface.

The track is 300 metres in length and the width varies from five to 10 metres. The BMX track features a tarmac finish strip and a multi-option straight that can test the skills of BMX riders to the limit.



A typical comment is this post on the BMX Talk forum: “Those guys know what’s up when it comes to building tracks of any size They work tirelessly and can gladly show you how to ride it too, so you know it all rolls well and everything works!”

Merton BMX Track London



The Merton BMX track, in London, is a modern twist on an original 80s track and was designed and built by Clark & Kent Contractors. This is a U-shaped BMX track within a standard U-track layout and was constructed to incorporate a downhill first straight to increase further the track speed for BMX riders. A Bensink gate was installed along with spectator fencing, a full floodlight system, officials’ areas, a pens area for BMX bike riders and a storage container. The Merton BMX track is the biggest to be found within the M25 circle, so the catchment area for BMX bike riders is massive, and the

BMX track has so far proved a great success. Built on behalf of Merton Council, build time was just nine weeks. It is just under 400 metres in length, and it is seen as a National Standard track in a regional-sized facility. The Merton track has proved very popular in all respects, and Formula One driver Jenson Button chose it as the venue for a TV advertisement shot there in the summer of 2012. The Merton BMX track is home to Merton Saints BMX Club which has been based there ever since August 2011 when the club was formed. The club holds youth and adult sessions with evening riding under the floodlights. Sessions are free of charge, but visitors need to register first, and they must be able to ride a BMX bike. The club also offers taster sessions for



those new to BMX racing with a two-hour introduction. Bikes, helmets and safety equipment can be provided. Day Camps are held regularly with supervised BMX activities for children throughout a day but riders must be confident in BMX biking and have attended a taster course first. The club holds BMX pay-and-play sessions which are supervised but not coached and again, a taster session is a prerequisite. Community Talent Programme courses are offered to riders who show promise and are keen to start racing. These riders get some free coaching before their introduction to the Merton Saints BMX Club.



Telford National BMX Track, Shropshire



Kier Construction, one of the largest construction companies operating in the UK, selected Clark & Kent Contractors to build the Telford National BMX track at the newly constructed Phoenix Academy School in Shropshire. Prior to this Clark & Kent had been involved in the design process, working closely alongside consultants and architects on BMX track designs to maximise the use of space within in the confines of the small site.

Working from formation level, Clark & Kent undertook care of every aspect of the build including;
Earthworks
A comprehensive drainage scheme.
Formation
Sub-base surfacing
Specialist tarmacadam surfacing
Full landscaping.
Clark & Kent also supplied and installed wooden spectator fencing to ROSPA standards and finally completed a bound surface car park area that was machine laid to achieve the highest levels of workmanship.



Since installation, participation levels for the sport of BMX in the Telford area have risen dramatically, and the facility has successfully hosted a number of large race events. The BMX track continues to go from strength to strength. The track, located in Dawley, is part of the Phoenix Academy, which now has national and regional standard facilities for many sports. The 390 metre BMX track includes an elite section for professional riders and a development track for young children and novices.



Royston BMX Track, Hertfordshire



Royston Rockets BMX Club appointed Clark & Kent Contractors to carry out a full rebuild of their regional BMX track to bring it to a modern national standard.

The track had a total overhaul that included an entirely new layout and footprint.

The project included introducing tarmacadam corners to national specification, the construction of limestone straights and an extensive landscape scheme.

To say that the client is happy is an understatement and since completion participation numbers at the BMX track site have rocketed.

Concrete works on the start hill included shuttering, pouring of various slabs and building of retaining walls to bring the start hill in line with modern specifications.

The works enabled BMX riders to have the opportunity to practise their starting gate techniques. A good selection of jumps was used to increase user skill levels and to help build the skills necessary to achieve their goals.

The whole BMX track was constructed by Clark & Kent with rider safety in mind and the results have surpassed the client's expectations.

Royston Rockets criteria in selecting a contractor for the works were to choose a firm that has expertise in the field, a specialist skill set to include tarmacadam surfacing and finally to introduce an exceptional landscaping scheme.



Marsh Tracks BMX Rhyl, North Wales



Marsh Tracks is an award winning 1.3-kilometre closed-circuit road cycling track and a national standard BMX race track based at the popular North Wales holiday resort of Rhyl.

The Rhyl BMX track is a unique design, built within a Gabion wall retained area and featuring several tarmacadam access paths.

The track built by Clark & Kent Contractors features multiple level third and fourth straights as well as a first straight which suits more powerful and skilled BMX riders.

A Bensink start gate was installed along with Bensink anti-skid plates, the same starting gate system used for the 2012 London Olympics BMX track.

The build time for the Rhyl BMX track project was four weeks in conjunction with Dawnus Construction on behalf of Denbighshire County Council.

Marsh BMX is located at Glan Y Morfa Industrial Estate, Marsh Rd, Rhyl and is widely regarded one of the UK's best bicycle facilities.

With qualified coaches on hand, Marsh Tracks is a great place to learn or improve on BMX riding and other cycling skills.



The track is home to newly formed Dragon Riders BMX club which offers training for youngsters.

Marsh Tracks at Rhyl now hosts many athletics and sports events that range from cycling to running and from skating and skiing as well as BMK biking.

There is a wide variety of cycle coaching on offer at Marsh Tracks, Rhyl, covering many cycle sports disciplines such as BMX, cycle-speedway, cyclo-cross, mountain bike, road and track.

Runnymede Rockets BMX Track



Clark & Kent Contractors were approached by the Runnymede Rockets BMX Club, which is based in Addlestone in Surrey. The Rocket's initial brief was to design a new BMX track located on the same footprint of their existing circuit. The primary objective was to finalise designs with a view to making a planning application and then to find the funding to update the facility. Clark & Kent worked tirelessly with the club to deliver a BMX track design following correspondence and consultation with both the user group and active club members.

When all stakeholders were happy with the design, it was subject to a planning bid which fortunately went through without hiccup and the primary task of securing funding began. Once funding was secured, we were approached by the Rockets for the second time and Clark & Kent was contracted to undertake the BMX track upgrade work at very short notice. The club had decided to start the project quickly intending to complete the upgrade in time for the South Regional racing event in August 2015. The team carried out the rebuilding and restructuring tasks within a very limited timescale and with the utmost attention to detail while adhering to health and safety requirements.



- The BMX building works included;
- Formation of existing material
 - Compaction of material
 - Sub base surfacing
 - Tarmacadam surfacing
 - Drainage modifications
 - Line markings
 - Landscaping scheme
 - Making good and reinstating areas disturbed by the works.



Lawrence Weston, Bristol Regional Standard BMX Track



Lawrence Weston, home of LDub BMX Club in Bristol. Working as a joint partnership for Bristol City Council and Access Sport. C&K won the public tender for the works which would include supply and installation of new BMX Start Gate system as well as a full track rebuild of existing regional track and accompanying pump track.

A stone sub base, stone dust straights and full tarmac berms and starting hill were used. In addition to this some concrete work was carried

out on the starting pad and start hill.

The facility is now fully compliant with British Cycling regulations for a Regional Standard facility and the club look forward to hosting a number of various events in the future.

Track was completed on time and on budget and the product surpassed the clients expectations.

6 week project



Talysarn BMX Track Gwynedd Wales



Clark & Kent Contractors were selected to construct a new BMX track at Talysarn, south of Caernarfon in the Snowdon National Park of North Wales.

The £183,000 track at the former Gloddfa Glai site in Talysarn features the same sections that were first used in the London 2012 Olympic Games.

The BMX circuit was built on outdoor public space that was once a hotspot for anti-social behaviour and Clark & Kent were primary contractors for this ambitious BMX project. Works included site clearance, tree removal, ground remediation and the installation of

drainage.

The BMX track was built with material won from the site, and sub base surfacing was applied and compacted.

A first of its kind in the UK is the use of charcoal block paving so that the track would blend in with surrounding slate quarries and other landscape features.

Derbyshire limestone dust was sourced to surface the track along with turf for the landscaping scheme.

Once the circuit was complete Clark & Kent installed a post and rail spectator fence with relevant fixtures and also supplied and installed a straight eight Pro Gate start system that is the original one used at the London 2012 Olympics.

The new track was funded by CIST Gwynedd, Mantell Gwynedd, Snowdonia National



Park's CAE Fund, Welsh Government, North Wales Police, Cartrefi Cymunedol Gwynedd and Magnox Ltd, with project management undertaken by Gwynedd property consultants Wakemans.

Both clients and fund providers were extremely satisfied with the results, and the BMX track has proved a resounding success and an asset to the village of Talysarn and North Wales.



“The Pump Track was delivered on time and on budget and we are delighted that it has become a focal point of activity in an area where we are short of leisure facilities. It has also had a positive impact on anti-social behaviour in the area giving young (and not so young) people something to do other than misbehaving and I would recommend this type of facility as a great intervention exercise in areas where anti-social behaviour is an issue.”: David W Evans Leisure and Sports Facilities Manager Portsmouth City Council



6

Pump Track Experience

Glasgow Pump Track

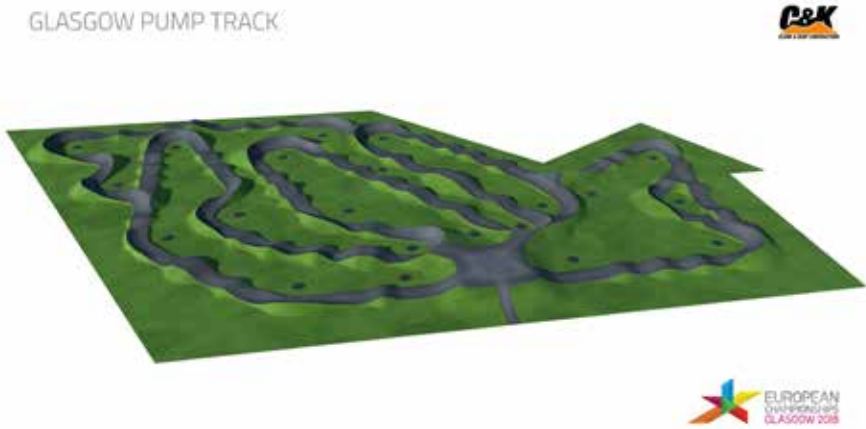


We were approached in 2016 by Glasgow life and Glasgow 2018 to give specialist design consultation regarding their new Pump track and BMX SX track which are to be used for the Glasgow 2018 European Championships.

At design stage Clark & Kent Contractors were given a design brief highlighting the requirements for an innovative and unique all user and abilities pump track. We offered a turnkey solution for this scheme which entailed;
A 3 day Design Workshop
Consultancy and advice

3D visuals and full staged design package
Developed a specification for all elements
Construction works
Track maintenance contract post installation

The pump track works were carried out in January 2018 which included;
Site prep
Installation of drainage
Importation of materials
Formation of materials
Compaction of materials
Sub base surfacing
Specialist tarmac surfacing
Landscape and turf scheme
Installation of floodlight scheme.



The project was delivered on time and on budget in adverse weather conditions and the finished product surpassed the clients expectations.

World Cycling Centre Pump Track, Switzerland



Clark & Kent were also commissioned to build a new BMX Pump Track adjacent to the SX track, running concurrently as a separate contract.

The new Pump Track was built to the same standards as the main track and designed to challenge and advance the skills of all levels of riders from children through to Olympic athletes. The result was a safe, fun and challenging pump track.

The construction time was two weeks, and work includes earthworks, sub-base surfacing, unbound surfacing, tarmacadam surfacing, landscaping, drainage and remediation.

All stakeholders have been very impressed with the workmanship and attention to detail employed by Clark & Kent.



Portsmouth Pump Track



application.

Finally we carried out the Design and Build proposal including site preparation, topsoil stripping, drainage, importation of soil, track construction, tarmac berms and start hill, track surfacing, landscaping and RoSPA report for a 57m x 35m BMX Pump Track with a fully tarmaced surface surrounded by an interclamp perimeter fence

Once the scope of works was agreed, the plan was put in place and we carried out the required works, which at the time the local authority didn't have the resources to complete.

The Pump Track was delivered on time and on budget



From the original meetings that were had, we took on this major project for Portsmouth City Council.

This included appointing a conservation/ heritage specialist to prepare a full heritage assessment and statement to assist with the planning application.

We carried out a full ground assessment by soil testing and providing recommendations with full submission of the planning

“I have no hesitation in recommending Clark & Kent as a company that delivers what it states that it will deliver and should we obtain funding for another similar facility in Portsmouth, we will certainly come to you”

David W Evans Leisure and Sports Facilities Manager Portsmouth City Council



Ingleton Pump Track



The track features limestone straights, tarmac berms and start hill area and a full landscape scheme to compliment the surroundings.

Catchwater soakaway pits were used to drain the area and with a tight area to work in with a number of site constraints meant that the project really had to be planned correctly in advance of the works. Lorries were entering site directly off the village road and this was all taken into consideration in the traffic management plan at tender and build stage.

The track has a variety of jumps and various lines which can be ridden either as sections or as a continuous loop and it has proved extremely popular with users from Ingleton village and also further afield.

The Parish Council were very happy with the finish of the product and have since approached us with regards to separate contracts and works. Please see references from Alison Hack the parish Clerk for Ingleton Parish Council.

C&K won the tender for the design and build of Ingleton's new Pump Track in April 2016.

Ingleton Parish Council were very happy with the appointment and said that our previous expertise along with our competitive bid and design work were some of the reasons they selected us for the works.

The track was intended primarily for Bmx and Mountain bike users and was constructed on a parish field public open space.



Broseley Pump Track, Shropshire



Clark & Kent Contractors won the tender for the design and build contract for the new pump track in Broseley, near Telford in Shropshire. North Shropshire Council tendered the project and appointed Clark and Kent as the specialist contractors to carry out the works. After the submission of a 3D BMX track design, Clark & Kent offered consultancy services and eventually completed the project. Work on the BMX pump track at Birchmeadow

Park Broseley included;

- Site clearance
- Setting out the pump track course
- Material placement and compaction
- Tarmacadam surfacing
- Landscaping scheme for the site

In addition to these works Clark & Kent Contractors also carried outline marking, reinstatement works and various groundworks items that exceeded the client’s expectation. The build time for the whole BMX project was three weeks, and the pump track has proven to be an asset to the park and a great facility for the local community and the BMX user group. Councillor Simon Harris, the Mayor of Broseley,



officially opened the BMX track in Birchmeadow Park where staff from Clark & Kent gave a demonstration of BMX biking skills. Plans for a BMX track at Broseley had been in the pipeline for some years before funding was secured by Shropshire Council and Broseley Town Council. Local people were quizzed on the facilities they required and all agree that the project has been a great success.



Chryston Pump Track



Clarke & Kent Contractors won the public tender bid for the construction of the BMX Pump Track at Chryston, near Glasgow, in Scotland. After supplying a bespoke 3D design for the proposed pump track area, the finer details of the track layout were bottomed out with the client.



Eventually, construction work started on the new BMX facility on an old outdoor public space at Lannrigg Park that was formerly a red shale football pitch. This gave Clark & Kent a good solid base to work on during construction of the BMX track. It also helped to get the work started on time despite the adverse weather conditions at the time of the year. A tarmacadam starting hill and berm corners were incorporated into the scheme along with a hard-piped drainage system to make this an all-weather facility. Once the BMX pump track was complete, a limestone dust was used for the straights and the landscaping project was prepared and seeded.



The project was funded through a North Lanarkshire Council regeneration fund to transform the run-down sports area. As well as the BMX track there are five-a-side football pitches while nearby Moor Park had a face lift to create an outdoor Boot Camp, with obstacle course equipment for use by all ages. Chryston High School took delivery of 30 brand new mountain bikes for use on the new BMX track thanks to £3,000 of funding from Education Scotland’s Core PE fund. Chryston is a village in the central belt of Scotland in North Lanarkshire between Glasgow and Stirling.



Cambridge Mini Wheel Track



Cambridge City Council approached Clark & Kent Contractors along with other companies to tender for a new outdoor public facility. Their design brief was to design, supply and install a multi-wheel multi-weather pump track primarily aimed at BMX biking beginners and micro-scooter users.

Clark & Kent came up with a bespoke innovative design which made the best use of the existing natural landscape. The track follows the meandering undulating nature of the site to give it an almost organic appearance.

It also gives users the biggest circuit possible while meeting the demands and constraints imposed by the Royal Society for Prevention of Accidents (RoSPA). Due to the nature of the site and limited access considerable attention was paid to the safety requirements of the location and all relevant health and safety procedures and CDM regulations were followed.

The track featured a complete tarmac riding surface that enables all types of users to enjoy the facility, including users of micro-scooters, roller blades, skateboards, BMX bikes and mountain trail bikes. A series of berms and variety of rollers and obstacles make this a compact, unique layout



with scope to make continuous laps of the track. In addition, Clark & Kent Contractors installed a comprehensive soakaway drainage system to ensure no standing water is found around the facility. Finally, the facility was landscaped using top soil and grass seed to give an aesthetic finish and tie it comfortably into the existing landscape. The track is positioned in the grounds of the Brown's Field Youth & Community Centre and gives parents and children the opportunity to enjoy the provision together.



Chula Vista Bike Skills Area, California, USA



The US Olympic Committee BMX Training Centre is located in Chula Vista, California so when we received the call from USA BMX Program Director Mike King at USA Cycling to build a BMX Pump Track it was a dream come true for the team at Clark & Kent Contractors.



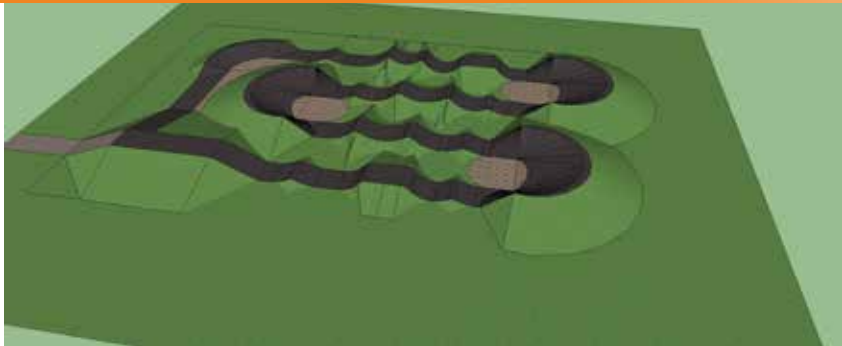
The brief was for the construction of an extensive and comprehensive pump track to include two BMX SX training straights with associated berms and a start hill and to carry out track maintenance on the existing facilities. Clark & Kent worked on the track design and supplied consultancy services and 3D drawings during the planning stage of this prestigious project. Unlike European BMX tracks, the American specification requires that the circuit is mainly constructed from earth and not built up in layers like a typical British or European BMX track. The Chula Vista BMX pump track is designed



to challenge and improve the skills of elite Olympic-level athletes and it features sections that reflect the different styles of BMX tracks found throughout the world. There are examples of steep French-style rhythm sections, long mellow American-style sections, multiple berms and also challenging straights that include road gaps and a box jump. The track is constructed of dirt with skid steers compacted with rollers. Test riding of the circuit was carried out by 2008 Olympic BMX Silver medalist Mike Day, GT's Corben Sharrah and Crupi BMX team rider Tyler Brown.



Christleton Scooter Track Design Cheshire



Clark & Kent Contractors were approached by members of Christleton Parish Council in Cheshire with a budget in place to build a tarmacadam scooter Pump Track for young people.

Extensive plans were drawn up, including 3D designs, for the council to evaluate before going ahead with the project.

The pump track design is for a relatively small circuit but with plenty of hills and bends incorporated to test scooter rider skills to the full as well as provide a fun track that is a pleasure to ride.

The skills scooter track has four straights that were designed to fit into the parcel of selected land as efficiently as possible.

Expert in BMX track building from Clark & Kent Contractors liaised closely with local councillors and young riders to ensure the finished scooter track met the needs of the local community.

A typical drainage scheme was incorporated into the project as well as the usual groundworks and specialist surfacing to ensure the finished track performed well in all weathers.



The scooter track at the Christleton playground is at King George's Field off Little Heath, Chester and is now well used by local youngsters.

The track has proved to be a great success for the parish and has attracted plenty of interest from local young riders and their parents.



Stanton Bowers Outdoor Education Centre



The BMX building project took a total of four weeks to complete with experienced staff from Clark & Kent Contractors overseeing all elements of work.

The track is cut into a sloping site and this enabled Clark & Kent to come up with a design that helps combine BMX rider safety with a fast flowing circuit.

Clark & Kent incorporated a tarmacadam start hill, sloping berms and return paths as well as laying the track out with a limestone surface. In addition to the pump track, Clark & Kent also erected a 90 metre stone footpath and a fence to ensure the facility blended in well with the

The BMX Pump Track built by Clark & Kent Contractors at Standon Bowers' Outdoor Education Centre was constructed on behalf of Staffordshire County Council. The project was aimed mainly at providing a beginners' BMX bike riding experience for primary school children.

As access to the BMX track site is through a private farm great consideration needed to be given to the design and construction of the project to minimise any impact on the rural surroundings.



surrounding countryside. Formerly the Standon Boys' Farm Home, established in 1885, Standon Bowers offers state-of-the-art facilities and activities to challenge and engage its students. Since completion, the BMX Pump Track has given the Outdoor Education Centre the provision to help develop life skills and confidence building among its students. The centre, located in Weston Lane, Standon, Staffordshire, also offers climbing, caving, watersports and trekking.



Burnwood Primary School



The pump track at Burnwood School in Staffordshire was the first purpose-built BMX track of its kind to be built at any school in the UK.

Constructed by Clark & Kent Contractors, it features tarmacadam turns, a start hill and return path, stone sub-base and dolomite surfacing.

The track is 120 metres in length and between two and three metres wide. It features a basic pump rack layout and jumps that provide an ideal introduction to the sport for new BMX riders.

The Burnwood School Pump Track was opened

to the public by Elite women’s World Champion Shanaze Reade in National Bike Week.

The build time for the track at the Burnwood Primary School, Stoke-on-Trent was about two weeks.

On the Burnwood site next to the BMX track is a mountain bike trail which features a long and compacted gravel oval with banked turns.

There is also a tarmac playground area inside the bike trail with road markings that is used to teach cycle safety.



Keswick Pump Track, Cumbria



featuring on television on more than one occasion.

A nearby play area in the Lower Park includes equipment for children of all ages, and there are wide open spaces for games. You can read more about Fitz Park, Keswick [here](#).

A new BMX track was built to the rear of the football pavilion, and the track is designed for use by both mountain bikes and BMX bikes.

Bike riders of all skill levels can test themselves on berm corners, step-ups, rollers, doubles, triples and even more challenging jumps.

Local schoolboys, Adam Suddaby and Thomas Slack, launched the campaign to get a BMX pump track in Keswick and worked hard to promote the project and collect funds to pay for it.

Clark & Kent’s proven track record in BMX track building led them to supply and install a new BMX and MTB Pump Track in the heart of the Lake District National Park in Cumbria.

Working alongside clients and Groundwork UK, Clark & Kent Contractors started work on a new track at Fitz Park in Keswick.

A cascading design was agreed to utilise the lie of the land, maintain good BMX rider flow and keep the riding experience varied over the whole course.

it was a pleasure to work in such a place of outstanding natural beauty, and the organic feel of the track has proven a resounding success,



The boys and their parents set up a project steering group, gave presentations to potential fundraisers and worked with specialists from Clark & Kent on-site to discuss the track layout and decide on the final design.

Local residents, businesses and organisations helped with fundraising and Fitz Park Trust appointed Groundwork NE & Cumbria to manage the ambitious BMX project. Keswick Town Council also supported the project.

Details of the efforts to raise funds for the BMX track are outlined on the Groundwork website.

Mile Oak Tamworth



The BMX Pump Track at Mile Oak in Tamworth, built on a recreation ground, is of an unconventional shape. The BMX area had to fit in the corner of an existing playing field next to a football pitch in Mile Oak, Tamworth. Clark & Kent Contractors worked alongside the Tamworth BMX Club and the local council to come up with a bespoke design that everyone feels makes great use of space. The Pump Track includes tarmacadam berms, rollers and a jump box as well as incorporating the other usual limestone dust BMX track features.

The track makes a great starting block for every level of rider and is the obvious place to start for any potential BMX rider in the Tamworth area.

Hundreds of enthusiasts attended the opening of the new BMX track in Mile Oak in 2012, built by Clark and Kent Contractors — the team behind the London 2012 Olympic BMX track. The BMX project was paid for with a £21,615 grant awarded by Veolia Environmental Trust through the Landfill Communities Fund. Mayor of Fazeley, Rebecca James, who cut the ribbon said: “I would like to thank everyone involved in the transformation of the BMX track. It’s a brilliant asset to Mile Oak and Fazeley.” Clients and Tamworth BMC Club are very



pleased with the finished product. The Mile Oak BMX track project was supported by Lichfield District Council, Fazeley Town Council, Bromford Living, Lichfield and District Community and Voluntary Services, Staffordshire County Council (Mazeley Youth Club), Tamworth BMX Racing Club, Mazeley Wheels, and young people from Fazeley and Mile Oak.



Tamworth BMX Pump Track, Staffordshire



The Tamworth Pump Track in Staffordshire is a four-rider BMX track and somewhat of a scaled-down version of a full-size BMX track. The Tamworth track incorporates four straights and three 180 degree bends. The track is around 300 metres in length, and it features a range of jumps and obstacles that progressively test the ability of the riders. The Tamworth track at Mile Oak s very popular and gets a lot of attention and many riders. The track is located next door to a high school, and it’s a popular choice for local youngsters. The local council has welcomed the launch of the track with open arms and has plans to

develop BMX tracks at other areas within the Borough of Tamworth to replicate the success. Lichfield District Council led the bid to raise funds for the project, supported by Fazeley Town Council, Staffordshire Young People’s Service, Lichfield and District Community & Voluntary Services, Mazeley Youth Club, Tamworth BMX Club and young people from Fazeley and the Mile Oak area. Comments from supporters have been very favourable, including this from BMX Talk: “The boys Clark and Kent have done it again, this time over in Tamworth ... The space has been used to perfection, and the set up looks both challenging and fun. Believe us when we say we have experienced various new ‘pump



tracks’ and most wouldn’t be worth getting out of bed for, let alone a full session. Get down to this for some skills training asap.” The Tamworth Pump Track has proved very popular since its completion by Clark & Kent Contractors in March 2012. The facility was was paid for with a £21,615 grant awarded by Veolia Environmental Trust through the Landfill Communities Fund



Mile Oak Tamworth



The BMX Pump Track at Mile Oak in Tamworth, built on a recreation ground, is of an unconventional shape. The BMX area had to fit in the corner of an existing playing field next to a football pitch in Mile Oak, Tamworth. Clark & Kent Contractors worked alongside the Tamworth BMX Club and the local council to come up with a bespoke design that everyone feels makes great use of space. The Pump Track includes tarmacadam berms, rollers and a jump box as well as incorporating the other usual limestone dust BMX track features.

The track makes a great starting block for every level of rider and is the obvious place to start for any potential BMX rider in the Tamworth area.

Hundreds of enthusiasts attended the opening of the new BMX track in Mile Oak in 2012, built by Clark and Kent Contractors — the team behind the London 2012 Olympic BMX track. The BMX project was paid for with a £21,615 grant awarded by Veolia Environmental Trust through the Landfill Communities Fund. Mayor of Fazeley, Rebecca James, who cut the ribbon said: “I would like to thank everyone involved in the transformation of the BMX track. It’s a brilliant asset to Mile Oak and Fazeley.” Clients and Tamworth BMC Club are very



pleased with the finished product. The Mile Oak BMX track project was supported by Lichfield District Council, Fazeley Town Council, Bromford Living, Lichfield and District Community and Voluntary Services, Staffordshire County Council (Mazeley Youth Club), Tamworth BMX Racing Club, Mazeley Wheels, and young people from Fazeley and Mile Oak.



Tamworth BMX Pump Track, Staffordshire



The Tamworth Pump Track in Staffordshire is a four-rider BMX track and somewhat of a scaled-down version of a full-size BMX track. The Tamworth track incorporates four straights and three 180 degree bends. The track is around 300 metres in length, and it features a range of jumps and obstacles that progressively test the ability of the riders. The Tamworth track at Mile Oak s very popular and gets a lot of attention and many riders. The track is located next door to a high school, and it’s a popular choice for local youngsters. The local council has welcomed the launch of the track with open arms and has plans to

develop BMX tracks at other areas within the Borough of Tamworth to replicate the success. Lichfield District Council led the bid to raise funds for the project, supported by Fazeley Town Council, Staffordshire Young People’s Service, Lichfield and District Community & Voluntary Services, Mazeley Youth Club, Tamworth BMX Club and young people from Fazeley and the Mile Oak area. Comments from supporters have been very favourable, including this from BMX Talk: “The boys Clark and Kent have done it again, this time over in Tamworth ... The space has been used to perfection, and the set up looks both challenging and fun. Believe us when we say we have experienced various new ‘pump



tracks’ and most wouldn’t be worth getting out of bed for, let alone a full session. Get down to this for some skills training asap.” The Tamworth Pump Track has proved very popular since its completion by Clark & Kent Contractors in March 2012. The facility was was paid for with a £21,615 grant awarded by Veolia Environmental Trust through the Landfill Communities Fund



Croydon



Croydon 4 man track for Croydon Council with Access Sport.
6 week project in Norbury Park. Design brief was to design and build a progressive track for all levels of riders. Track had tarmac start hill and berms along with limestone dust straights and landscape scheme.
The track has brought more users into Norbury park and has proved very popular with a newly formed bmx club.



Beckenham Place Park, Lewisham



Access Sport project. 4 week build time.
On time and budget.
Tarmac beds and start hill area.
Soil and grass seed.
Proven very popular within the local community.
Giving youngsters opportunity and provision to improve.
Feeder track to the larger tracks in the City.



Pye Green Road, Cannock



Pye Green Road pump track in Cannock was constructed by C&K in 2017 for Blakedown Construction who are redeveloping the whole Pye green road sports complex. A narrow patch of land meant that 2 adjacent straights leading up into a small pump track was the chosen design due to best fit for the particular site. Track length is around 180m in length with the option to continuously loop round if required.

The track contains a variety of jumps, berms and features to keep it exciting for all levels and types of users, whether they be bmx bikes, rollerbladers or skateboarders. The track was constructed in a 4 week period from start and all stakeholders in the project were delighted with the finished product and the boost it has given to the parts and local community alike



Castle Cary, Somerset



Castle Cary Town Council selected Clark and Kent Contractors through a tender process to design and build their new pump track on a public open space within the town of castle Cary. Their experience was a big factor in choosing them for this exciting new project for the town. A limited budget and relatively small area meant that C&K came up with an interesting design which utilised the existing lie of the land to give added value and benefit to the users.

Track was constructed using an all tarmac surface to keep it inclusive for all users along with a soiled landscape scheme and other works were undertaken. Castle Cary Town Council were delighted with the finished product and the 4 week construction period meant minimal disruption to local residents and stakeholders. The track is proving a great success within the local community and is been used to develop youngsters social skills along with their cycling and skateboarding skills also.



7

Skate Park Experience

Jeremy Donaldson ARCHITECT

QUALIFICATIONS

2007 • PG Dip Professional Practice in Architecture, University of Westminster
2000 • PG Dip Architecture, UEL (with Prof. Peter Salter)
1997 • BA(Hons) Architecture, South Bank University
1993 • HND Building Studies, South Bank University. (1st year > transfer to BA)

RECENT PROJECTS Consultancy and Private Commissions from 2017

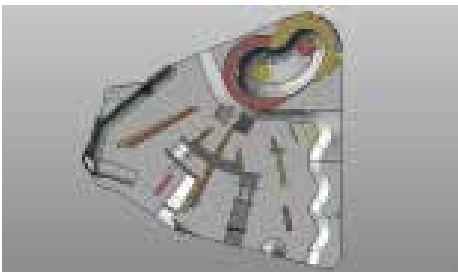
ELVERUM AKTIVITETSPARK • 2018 - present • 2,500m² skatepark, cycle track and parkour park, Elverum, Norway. A social activity hub for a school for refugee children; working in three interconnected areas within a larger masterplan. Tendered on full production information & 3D, for construction under D/B contract summer 2018.

LIER PARKOUR • 2018 - present • Parkour park for school, Lier, Norway. One of three designs for parkour parks in Norwegian Schools. Construction underway under D/B contract, April 2018.

KRAGERØ AKTIVITETSPARK • 2017 - present • 1,400m² skatepark and parkour park, Kragerø, Norway. Regional skatepark and parkour, designed in homage to Edvard Munch, painted his most famous works in Kragerø. Design development ongoing, to complete production information May 2018.

PARC PARCH PARK • 2013 - present • Community Arts Space, Bethesda, North Wales. £180k: Community consultations, design workshops, brief development, Stage 3 design, planning negotiations, and prepare brief for additional consultants.

Uckfield Skatepark. £120,000 skatepark and landscaping in



South Downs AONB: Acquire project and form appointment, brief development, community consultation, prepare programme/roles; advise on procurement/contract, full design service inc. complex planning negotiations. 2007 - 2009

Hereford Skatepark: Develop lead and agree terms for tender bid with co-bidding contractor; manage all client/planning/contractor liaison; full design service inc. public consultations & design workshops, contract administration. 2006 - 2013 (Two further phases carried out with Wheelscape).

Love Lane Skatepark, Petersfield, Hampshire: Acquire £225,000 project and form appointment, brief development, client/local authority liaison, consultation / user-group workshops and presentations; full design service; from 2007

Kendal Skatepark, £75,000: skatepark within Kentmere river overspill, developed with RG Parkins, intensive community consultation Hereford Skatepark, 3 phase build 2006 (with RDA) to 2013 - planning and highways issues, community consultation, masterplanning etc.

Wheelchair Skatepark, Extension to Love Lane, Petersfield: £138,000 Project director - worked with Treloar College for the Physical Disabled to develop winning scheme for world's first wheelchair skatepark, as an extension to our existing skatepark. Dec '13 - June '14 [http:// www. bbc.co.uk/news/uk-england-hampshire-27668402](http://www.bbc.co.uk/news/uk-england-hampshire-27668402)



Burwell Skate Park



C&K successfully tendered for the Burwell Skatepark project in 2018. An external Consultant was used by the council to procure the works and we were selected due to our experience of working with Parish Councils on design and build projects and also previous local works of similar nature.

C&K undertook the project in 2018 and delivered the project working alongside Opus Skateparks. We slightly revised the design after input from the user group and the additions really stood out in the finished product.



The programme of works included removal and recycling of an existing skatepark, site clearance, earthworks and formation works, shuttering, on site fabricated steelwork, a complete free form concrete skate surface. In addition to these works to complete the skatepark a floodlight scheme was included, some fencing works and finally a landscape scheme.

The project took 8 weeks from commencement and the final product exceeded the councils and parish councillors expectations.



Victoria Park Skate Park, Leicester



An old Basketball court area was to be regenerated to produce a small skate plaza style park. Our works included, site setup, site clearance, supplying concrete footings and reinforced concrete blockwork walls. Once this phase was completed we carried on with the skatepark build to include the earthworks, reinforced steel and then the concrete phase. Additional tarmac surfacing work was requested by the client Works were completed in 6 weeks. We acted as main contractor for the oldest skatepark company in the UK and the client was Ground Control on behalf of Leicester City Council.



Pilsey Skate Park, Chesterfield



We undertook this project as main contractor for the oldest skatepark building company in the UK. A rectangular plot was allocated in a public open space in Pilsey at the Miners Welfare playing fields. The park had a variety of obstacles and areas to include a full width mini ramp/ box jump, flat bank, vert quarter, hip and various ledges. ROSPA were very happy with the results of the post installation inspection and the finished park was well received and an asset for Pilsey. Project was 5 weeks to completion and the client was very happy with the finished product. Pilsley Town Council.



Norwegian Skate Park Company



We have carried out numerous European projects on a subcontract basis for a Norwegian skatepark company who are one of the biggest park suppliers in Europe. Some notable projects which show our wrk include, Vestby, Alesund and Tromso skateparks. We had a team of 4 of our guys on several projects over a 12 month period in 2016. We feel that the techniques which we have learned in Scandanavia are invaluable. Scandanavians regularly build and install skateparks in adverse weather conditions and knowing the methods of best practise and approach to use has given us a head start on other UK based skatepark companies as we appreciate and understand the prep work and finishing work which is required to ensure the longevity of the skatepark for a council.



Saxmundam, Suffolk



We were the main contractor for the oldest skatepark building company in the UK. Saxmundham park had a flow section to include transitioned fun box, roller and funky vert wall. It had a raised ledge section with steps and drop off in addition to a conventional mini ramp and quarters setup. Park was completed with adverse wether conditions on time and on budget and the council were very happy with the project. Saxmundham town councillor Cheleigh Trotter-Langlois was very happy with the safety and attention to detail that C&K employed throughout the engagement.



Prevail Skatehouse, Poole



Private Bowl for Robert Guerney



8

MTB Courses & Bike Skills Areas Experience

Nostell Priory National Trust MTB Trails

In 2016 The National Trust were looking to implement several different Mountain bike trails for all abilities at a number of their properties throughout the UK. Clark and Kent tendered for and won the prestigious project at Nostell Priory near Wakefield. The works were to include, consultancy, trail marking, trail design work and ultimately the trail construction. Nostell Priory is a period Robert Burns property which was to be a fitting backdrop to what has proved to be a fantastically received finished product. C&K were selected for their professionalism and background in working with a number of prestigious clients on a variety of projects which needed addressing in the most efficient way with consideration to having a low impact on the surrounding areas and landscape.



C&K started construction in October 2016 and works took around 12 weeks through to completion. 2 separate trails were constructed, bot a green and blue grade trail along with the resurfacing and widening of around 1 km of shared use trails. Works included sensitive and selective tree works, trail clearance, importing materials, formation of materials and compaction. Finally a landscape scheme was implemented to ensure that the ground was left with minimal disruption and enabled quick recovery times for the surrounding areas.

In addition to the trail works C&K undertook drainage works, Heritage stone masonry and repointing works and additional landscape works at the property.



Conlig 'Go MountainBike' Instructors Coaching Area

Clark & Kent Contractors were selected to undertake the design and build of a new section of the mountain bike course at Conlig. The facility will be primarily a 'Go Mountain Bike' MTB Instructors coaching area (Cycling Scotland - Mountain Biking Proficiency Award). It will not be a public skills area.

The Detailed brief we followed was:

The facility should be capable of coaching a new rider through all of the Go Mountain Bike skills level 1 & 2 along with basic riding and core skills. Core skills include: balance, safe effective braking, gears, body position, weight shift, cornering, bunny hops, pumping, track stands, manuals, front and rear wheel lifts, energy management etc...



The facility should be fun to ride.

All features to be landscaped with the aim of reducing fall zone risks.

Fall zones are to be clear of all hazards and finished in such a way as to anticipate falls from beginner riders. It is essential beginner riders leave the facility having enjoyed a positive experience. There is no pressing need for the trails to reflect local trails (there are none in the immediate area). The closest being the lead mine / quarries above.

Expected usage: 8-10 riders, for one session, 5 nights per week (little and often).

Trail tread will be a compacted type 1 sub base with a comparable dust running course. This will ensure the track is usable in all weathers and increase the general durability of the trail tread.



The features should be designed to assist the rider with specific off road riding skill development, in a safe progressive manner.

The facility will also be used for youth leader and instructor off road cycling inductions, skills assessments, skill development etc...

The Conlig facility will be a closed facility i.e. all riding will be under supervision of an instructor, with no access for the general public. Facility will be fenced off on the boundary. Rider speed should in general be slow to medium to suit the entry level skills being taught. The facility is specifically for beginners under instruction.

Instructor must be able to see the riders at all times, raised viewing points would assist this. Short looping sections are the preference, allowing repeat runs at one single feature and allowing the instructor and student to converse comfortably, on as small looping section. Sections although short, should have suitable flow between features. Rollers, grade dips, humps, compressions and grade reversals can be used to assist this (within the beginner remit).



Dalby Forest, Yorkshire MTB Trail Section

Dalby Forest is situated on the southern edge of the North York Moors National Park and is home to some brilliant MTB singletrack trails, downhill routes and a bikepark.

With Red and Black Graded XC trails that make up a world cup standard XC loop, a good level of fitness is required but if you dig deep the rewards are worth it! The downhill trail is a short standalone trail with jumps drops and technical riding maintained by singletraction



Clark & Kent were contracted to install a new 500m length of trail within the Dalby forest.

Subcontract.

A challenging blue grade trail.

Dalby Forest Yorkshire.

Trail included, berms, rolling crown switchback turns, cambered features and generally a downhill flowy trail for all abilities.

Work was commissioned by Forestry Commission.

3 week build time in adverse weather conditions, fantastic section that's been extremely well received.



***“We would particularly like to point out the excellent quality of work and the attention to detail provided by C&K. It was a pleasure to work with C&K on this important project” : Paul-Henri Rey
World Cycling Centre***



9

References



References



INTERNATIONAL CYCLING UNION

To whom it may concern

Concerning : Clark And Kent contractors BMX

Aigle, 2012 – 09 - 18

Dear Madam,
Dear Sir,

During the 2012 BMX season the UCI has worked twice with Clark and Kent contractors for the construction of a BMX track. The first time was during the 2012 UCI BMX World Championships in Birmingham where a non permanent track was constructed in a very short time frame. The second time was during the rebuild process of the London BMX track for the Olympic Games. This track needed to be remodelled/reconstructed completely.

During both these events Clark and Kent did a very good job during the construction process and the actual competition period where maintenance and a good follow up was required. Everything was done within the requested time schedule and with a very good sense of responsibility.

Furthermore the feedback from Clark and Kent and the communication with the whole building team was always very constructive which resulted in a positive collaboration with the UCI during the 2012 BMX season.

Yours faithfully,

Ellen Bollansee
UCI BMX coordinator – Off Road



To whom it may concern

Aigle, 11 August 2014
Ref: World Cycling Centre / phr

Clark & Kent Contractors were mandated by the World Cycling Centre to design and build the new BMX Supercross track and pumptrack. C&K completed the work in May 2014 within the initial budget and (admittedly short) deadlines.

C&K collaborated closely with our specialists with the goal of building a state-of-the art BMX track.

The partnership with the internal project manager as well as other service providers involved in the project was constructive at all times, and the professional attitude of all C&K collaborators was very much appreciated.


We would particularly like to point out the excellent quality of work and the attention to detail provided by C&K.

It was a pleasure to work with C&K on this important project.

Paul-Henri Rey
Manager

CMC Exploitation SA • Chemin de la Mèlée 12 • CH - 1860 Aigle / Suisse
Tél : +41 24 468 58 85 • Fax : +41 24 468 58 90 • E-mail : cmc@uci.ch • Web : www.cmc-aigle.ch





*Mitglied des Deutschen Olympischen Sportbundes,
der Union Européenne de Cyclisme und
der Union Cycliste Internationale*

Otto-Fleck-Schneise 4
60528 Frankfurt (Main)

Tel. 069/967800 – 0
Fax 069/967800 – 80

Internet: www.bdr-online.org
E-Mail: info@bdr-online.org

Commerzbank AG
Swift – Bic.: DRESDEFFXXX,
IBAN: DE2450080000510067700

Bund Deutscher Radfahrer e.V. • Otto-Fleck-Schneise 4 • 60528 Frankfurt (Main)

Clark & Kent Constructors

Frankfurt, 03.07.2018

In 2012 the City of Stuttgart started planing to build a full-size BMX and SX Track with a 5m and 8m start hill. C&K were involved in the planning from the very beginning and knowledge was very helpful to complete it.

In 2018 they finally started building the track. C&K built the track always receiving help from the coach and the riders from the Olympic Training Center in Stuttgart with the aim of having a track layout wich fits the needs of amateur and pro riders.

As soon as C&K started building the track they worked close together with the project manager, coach and several company’s who supplied different materials for the track. The work atmosphere in between all the partners was always very constructive and focused on creating a good project.

Because of C&K contractors knowledge and professionalism, they where able to make quick progress in a short period of time.

This master piece they have created is exactly how a track with the right dimensions and design should look like. On the same hand we can say that all the obstacles in this new track have a fantastic flow, and at the same time everything is demanding and safe for riders with different skill levels. With their focus and love for smalls details, this track is a perfect example of the absolutely state of the art BMX and SX track.

German Cycling Federation


BUND DEUTSCHER RADFAHRER E.V.
Otto-Fleck-Schneise 4 • Tel. 069/967800-0
60528 FRANKFURT (MAIN)

Falk Putzke-Schmidt
Head of High Performance

Castle Cary is a 'Fair Trade' Town



Castle Cary Town Council
The Market House
Market Place
Castle Cary
Somerset
BA7 7AH
Tel: 01963 359631
Email: town.clerk@castle-cary.co.uk
www.castlecary.org.uk

Castle Cary Fairfield
Pump Park Project
Reference

Castle Cary Town Council and Ansford Parish Council purchased a five acre agricultural field in order to provide a recreational facility for young and old people in the community. One activity requested through consultations was a pump track. After several months of fundraising and tendering the Councils appointed Clark and Kent as the contractor to install the facility.

What a delightful, hardworking, reliable, committed team of people they are and after working through some atrocious weather conditions the long awaited pump track was built and ready to use.

We know that our track is small in comparison to the many projects that Clark and Kent get involved in but all work was conducted in a very professional way and we did not feel that this disadvantaged us in any way.

Penny Steiner
Castle Cary
Town Councillor & Project Leader



Clark & Kent Contractors
Cedars
Ashley
Market Drayton
Shropshire
TT9 4JU

Culture & City Development

Civic Offices
Guildhall Square
Portsmouth
PO1 2AL

Phone: 023 9283 3521
Ref:
Date: 20 February 2018

Dear Kent

Reference: Provision a BMX Pump Track at Hilsea

The Pump Track has now been in operation for a couple of months and I thought it was time to write to you with my congratulations on a job well done. In fact from the original meetings that we had you took on this major project for Portsmouth City Council. This included:

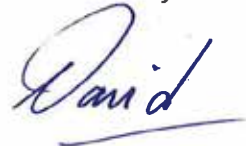
1. Heritage assessment - conservation/heritage specialist preparing a full heritage assessment and statement to assist with the planning application.
2. Ground assessment - contaminated land - carrying out soil testing and providing recommendations.
3. Submission of the full planning application.
4. Designing and Building - including site preparation, topsoil stripping, drainage, importation of soil, track construction, tarmac berms and start hill, track surfacing, landscaping and RoSPA report for a 57m x 35m BMX Pump Track with a fully tarmacked surface surrounded by an interclamp perimeter fence

Once we had agreed the scope of works, the plan was put in place and you carried out the required works, which at the time this local authority didn't have the resources to complete. Despite your company being a long way from Portsmouth, you didn't hesitate to meet with me on site.

The Pump Track was delivered on time and on budget and we are delighted that it has become a focal point of activity in an area where we are short of leisure facilities. It has also had a positive impact on anti-social behaviour in the area giving young (and not so young) people something to do other than misbehaving and I would recommend this type of facility as a great intervention exercise in areas where anti-social behaviour is an issue.

I have no hesitation in recommending Clark & Kent as a company that delivers what it states that it will deliver and should we obtain funding for another similar facility in Portsmouth, we will certainly come to you

Yours sincerely



David W Evans
Leisure and Sports Facilities Manager

**INGLETON
PARISH
COUNCIL**

www.ingletonparishcouncil.co.uk

E-mail: ahack1@hotmail.co.uk

Telephone 015242 42391

CLERK:
MISS A. M. HACK
9 CLARRICK TERRACE
INGLETON
CARNFORTH
LANCS
LA6 3HP

K. Bridgett Esq.
Messrs. Clark and Kent
Cedars
Ashley
Market Drayton
Shropshire
TF9 4JU

8 February 2017

Dear Mr. Bridgett

Ingleton Pump Track

Ingleton Parish Council have asked me to write to say Clark and Kent have done a fantastic job of constructing our pump track which has created a real buzz in the village and has proved extremely popular with young locals and visitors. I found them to be helpful and enthusiastic contractors who knew their work thoroughly and were always prepared to go the extra mile for a better outcome.

They gave quality service at a very reasonable cost, and with the village now having an excellent facility we really could not ask for anything better. The post installation report from ROSPA was very positive and Ingleton Parish Council can strongly recommend this company.

Yours sincerely



A. M. Hack (Ms)
Parish Clerk



HORDLE PARISH COUNCIL

Council Offices, Vaggs Lane, Hordle,
Hampshire, SO41 0FP

Tel: 01425 611119

email: clerk@hordleparishcouncil.gov.uk

Web: www.hordleparishcouncil.gov.uk

Date: 17 May 2016

Reference for Clark and Kent

To whom it may concern

Hordle Parish Council chose Clark and Kent to build its new BMX Pump Track at Dudley Avenue Recreation Ground. Clark and Kent were awarded the contract after comparative bids were received and were chosen as the quote offered value for money. The Parish Council was also impressed by their personal credentials and expertise of competing at the highest level.

The pump track was completed on budget and on schedule (despite it being an extremely wet period). Clark and Kent managed the build on public open space ensuring the safety of the public at all times. Whilst they were on site they were flexible, courteous and considerate. The brief was to provide a progressive track that could be ridden at different levels of competence and ability and this has been delivered and it is proving successful in attracting different users of the site.

The Parish Council and users of the BMX track are delighted with the finished product. One of the aims of the project was to increase public use of this site and that has been achieved. Another aim was to improve facilities for the young people in the Parish and the Pump Track has offered a unique local facility which is receiving high usage at weekends and in the lighter evenings.

Clark Bridgett also took part in some discussion with the young people to finalise the design of the track and also came to the Grand Opening and spoke to the young people and rode the track as part of the afternoons activities. The Parish Council wanted the users to feel involved in the design process and his skills to facilitate this discussion were extremely helpful.

Overall the project has been a great success and Clark and Kent were an excellent company to work with. For further information please feel free to contact the Parish Council on the number or email above.

Yours sincerely

Malcolm Warne Holland

Cllr Warne Holland
Chair of the Working Party

Contact: Chris Smart
Tel: 01698 524837
Fax: 01698 302118
E-mail: smartc@northlan.gov.uk
Date: 27 April 2015
Our Ref: CS
Your Ref:



Regeneration and Environmental Services

Graham Mackay
Head of Roads & Transportation
Fleming House,
Cumbernauld
G67 1JW
www.northlanarkshire.gov.uk

Reference : Broadwood BMX Track - Cumbernauld

Clark and Kent were successful at winning the tender to create Scotland's first European standard BMX facility within North Lanarkshire.

From the beginning of this project C&K were keen to be involved in every aspect and any additional work created at the clients request was always no problem and did not change the final proposed completion date for the client. The project was also delivered within the allocated budget and due to C&K's flexibility the client was able to achieve extra work and add to the facilities overall experience for all riders and visitors.

C&K were always happy to return and complete any small snagging items when requested keeping the overall project to an extremely high standard as expected.

C&K were great to work with from start to finish and North Lanarkshire Council would be very happy to work with them again in the future and would recommend them to other clients.

Please contact Chris Smart, Roads and Transportation, on 01698 524837, should you have any queries.

Yours faithfully

Christopher Smart
Christopher Smart

Paul Jukes, Executive Director
Regeneration and Environmental Services
Civic Centre, Windmillhill Street,
Motherwell ML1 1AB



service and people first

Chief Executive's Office



Our reference C and K Reference 2011

Contact Simon Pickering
Direct Dial 01284 757077
Email simon.pickering@stedsbcc.gov.uk

November 2011

To Whom It May Concern,

Clark and Kent Contractors Reference

We had the pleasure of working with Clark and Kent Contractors in Bury St Edmunds, Suffolk. Clark and Kent Contractors successfully won the tender to construct a large BMX Pump / Play track on previously unused land on our skate park site.

The BMX Track which Clark and Kent Contractors built was the main feature of significant site improvement programme for our Skate Park site. The improvement programme has been completely led by young people including raising 50,000 from the National Lottery's Changing Spaces fund.

Clark and Kent Contractors were completely behind the project and understood that it was youth led. Their support for the project was very evident in their approach. Clark and Kent Contractors took the young people's ideas for the track and developed a track which has been described by young people and the older BMX community as 'amazing'.

The completion of our track has sparked interest from other towns, councils and more importantly the local BMX Community within the area. These groups are now looking to develop similar facilities.

Clark and Kent were very reliable, hard working and driven to construct the best possible track to the highest standard. They did their utmost to be part of the project including attending our launch event.

I would be delighted to recommend Clark and Kent Contractors services. If you require any further information or would like to ask any questions please do not hesitate to contact me.

Yours sincerely

Simon Pickering
Youth & Community Development Officer

Cathy Manning • Head of Neighbourhood Management and Development
West Suffolk House • Western Way
Bury St Edmunds • Suffolk • IP33 3YU
Phone 01284 757002 • **Fax** 01284 757607 • **TypeTalk** 18001 01284 757002
Departmental email community@stedsbcc.gov.uk
Website www.stedmundsbury.gov.uk

W:\COMMUNITY DEVELOPMENT\UNITYouth and Community Development - Simon\Wos Up Project\Wos Up 2011\28.01.11 Wos Up letters to

CROYDON
www.croydon.gov.uk

Place Department
6th Floor Zone D
Bernard Weatherill House
8 Mint Walk
Croydon, CR0 1EA
Tel/Typetalk: 0208 726 6000 xtn. 61901
Minicom: 02087605797
Email: Alison.plant@croydon.gov.uk

Our ref: SDO / ACP
Date: 29 September 2017

To whom it may concern

Clark and Kent Contractors – Reference

We appointed Clark and Kent Contractors to supply and install the BMX track at Norbury Park, Croydon in July 2017.

The track was completed well within time and on budget. From the outset, the project went well and staff were friendly and approachable at all times. Any requests for updates were given immediately with a clear breakdown of how contract items were progressing.

We are very pleased with the track and I would thoroughly recommend Clark and Kent Contractors to anyone wishing to install a BMX track or off road cycling facility. Should you wish for further information please do not hesitate to contact me.

Yours sincerely,

Alison Plant (Mrs.) CMLI
Service Development Officer



Clark Bridgett

Clark & Kent Contractors
'Cedars'
Ashley
Market Drayton
Shropshire
TF9 4JU

VolkerFitzpatrick Ltd
Address
Codham Hall Farm
Great Warley
Brentwood
Essex
United Kingdom
CM13 3JT
Telephone
01277 234566
Facsimile
01277 263642
Website

RE: Letter of Reference

To Whom It May Concern,

Volkerfitzpatrick employed Clark & Kent Contractors (C&K) to construct a 400m long BMX track as part of the A2 Activity Park scheme. The track included a pro-section straight, 5m high start hill and 3.5 high tarmacked berms. C&K, due to their franchise with Bensink, were able to install a top of the range automatic starting gate system.

C&K were selected for the contract due to their high reputation for building top quality BMX tracks. After working with them on the contract it is clear why they have built up such a reputation.

The contract included a design consultation with a selected user group, something which C&K happily helped me on. As C&K are BMX riders themselves, they were able to have the vision and understanding of our clients requirements and it made the design process much smoother for myself.

In terms of the construction process, C&K are extremely hard working and would have worked much longer hours if our planning conditions didn't prevent it. The programme was still achieved comfortably and the quality of build is first class. A view supported by my client and from a user group test event.

Our H&S requirements, due to the BMX track being in the centre of a large construction site, were a little more demanding than C&K were used to. However, they were happy to comply with the site requirements and safety was never a concern.

All of the guys who work for C&K were a pleasure to have on site and they clearly enjoy the work they do and take great pride in delivering a good project – a rarity on a civil engineering contract.

The best form of reference I can give is to say, if I have the chance to build another BMX track, C&K will be building it for me.

Yours faithfully
for Volkerfitzpatrick Ltd

Neil Scarboro
Site Agent

07768 531109
Neil.scarboro@volkerfitzpatrick.co.uk

VolkerWessels company

Registered in England and Wales
No. 2387700
Registered office
Hertford Road, Hoddesdon
Hertfordshire, EN11 9BX

20 October, 2015

Business Recommendation Letter

Mini-wheels Track Brown's Field Youth and Community Centre, Cambridge – completed June 2015 – budget £30K

C&K are that rare blend of talent, expertise and quality construction all rolled by a digger and dumper into one!

“No job is too small” was their mantra which certainly left a lasting impression!

The final product easily demonstrated their years of know-how with a compelling and dynamic design that totally reshaped the previous space.

On this basis we would have no hesitation in recommending them to others.

Declan O'Halloran

Engineer (Projects)
Streets & Open Spaces

Development Team
Cambridge City Council
Streets & Open Spaces
01223 458523

PO Box 700, Cambridge, CB1 0JH
cambridge.gov.uk • Switchboard: 01223 457000
twitter.com/camcitco • facebook.com/camcitco



Clark & Kent Contractors services were procured by Thomas Vale on behalf of Birmingham City Council to design and build the first international standard BMX track in the country to incorporate a UCI approved 5 meter start hill with a Bensink barrel safety gate system.

Throughout the whole consultation period of the design Clark & Kent worked closely with Thomas Vale and Birmingham City Council to utilise to proposed site to maximum effect.

The track building project was undertaken with a thoroughly professional and diligent attitude, with all site restrictions and health & safety procedures been adhered to with a work ethic that showed total commitment and pride at every level.

Birmingham City Council now have a sporting venue in Perry Park where the BMX track is located to rival any major venue worldwide involved in the running on International BMX fixtures but at the same time can be utilised by the local community and BMX projects throughout the region therefore I have no hesitation in recommending Clark & Kent Contractors to design and build BMX facilities suitable for all levels of the sport.

Garry Peal
Business Development Manager
Task Force 2012
International Events

Tel.No. 0121 675 2799



Manor House
40 Moat Lane
Birmingham
B5 5BD

Tel: 0121 464 2012
Fax: 0121 464 6035



June 23, 2015

Clark & Kent Contractors
Cedars
Ashley
Market Drayton
Shropshire
TF9 4JU

REFERENCE - CLARK & KENT CONTRACTORS

To Whom It May Concern:

Clark & Kent Contractors successfully completed and carried out a plan to rebuild our BMX track surface and reconstruct our asphalt corners (berms) at the Novant Health BMX Supercross track in Rock Hill, South Carolina, the first Supercross BMX track on the East coast of the United States and open to the general public.

The contractors were devoted to the entire project and worked the necessary hours to complete the projects within our timescale.

During the project the contractors were approachable and content to give feedback on the design. They received advice from some of our local riders during the build process and were noted to be very enthusiastic on their observations. They also took the necessary time to make sure the project met the needs of our local riders and staff.

The end results of their work surpassed our expectations and the level of work was carried out at the highest level of professionalism. It was noted beforehand their work was highly regarded worldwide and this was observed during the construction and test riding phase.

In closing, I would not hesitate to recommend Clark & Kent Contractors for any BMX project building needs or renovations.

If you require any further information or would like to view images from the project, please do not hesitate to contact me.

Best regards,

Mike King
BMX Supervisor
Novant Health BMX Supercross Track



Contact

Call:

01630 672329

07866 206812

07814 660387

Email:

ckcontractors@btinternet.com

clarkbridgett@hotmail.co.uk

kentbridgett@hotmail.co.uk

